

UN-ISDR 2010-2015 AMADORA LOCAL CAMPAIGN

TRAINING OF TRAINERS ON THE ROLE OF LOCAL GOVERNMENTS
IN MAKING CITIES MORE RESILIENT TO DISASTERS
[LEBANON 4-6 SEPTEMBER 2012]



INTERNATIONAL STRATEGY FOR DISASTER REDUCTION
Making Cities Resilient – My City is Getting Ready 2010-2015
<http://www.unisdr.org/english/campaigns/campaign2010-2015/cities/>



AMADORA MUNICIPALITY
Campaign Team
Tel. +351 21 494 86 38 | e-mail: proteccao.civil@cm-amadora.pt
www.cm-amadora.pt
www.facebook.com/amadora.resiliente
<http://www.youtube.com/user/UNISDRAmadora/videos>

STAKEHOLDERS:





INDEX

1. WORLD DISASTER REDUCTION CAMPAIGN 2010-2015

1.1. Making Cities Resilient – My City is Getting Ready!

2. AMADORA LOCAL CAMPAIGN 2010-2015

2.1. Amadora Municipality

2.2. Campaign first steps

2.3. Implementation of Ten Essentials

2.4. Campaign resume

3. FINAL NOTES



1. WORLD DISASTER REDUCTION CAMPAIGN 2010-2015



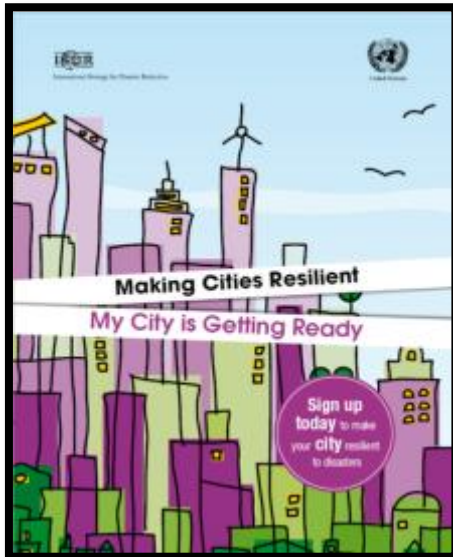


1. WORLD DISASTER REDUCTION CAMPAIGN 2010-2015

1.1. MAKING CITIES RESILIENT – MY CITY IS GETTING READY!

MAKING CITIES RESILIENT

MY CITY IS GETTING READY!



1. Include the issue of risk reduction into the planning process, through participatory sessions

2. Strengthen and support local governments, community groups and leaders involved in risk management

3. Urge the local government to take steps to reduce the vulnerability of cities to disaster

4. Increasing awareness of citizens and governments for reducing urban risks

5. Provide various local entities with its own budget to promote risk reduction activities

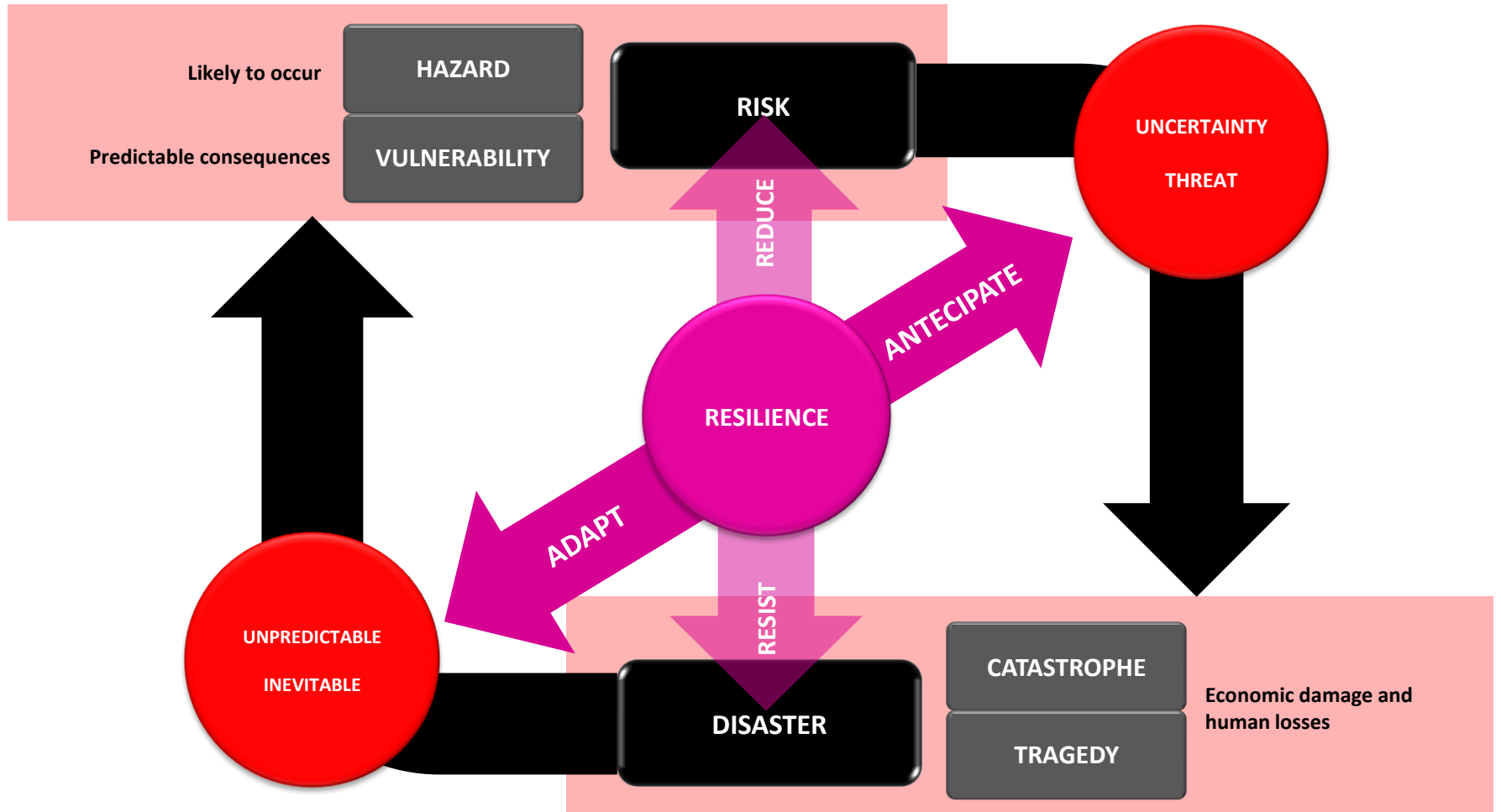
Need of local communities to face disasters and develop a set of good practices that enable communities to resist, adapt and recover (resilience)

**HYOGO FRAMEWORK FOR ACTION
2005-2015**



1. WORLD DISASTER REDUCTION CAMPAIGN 2010-2015

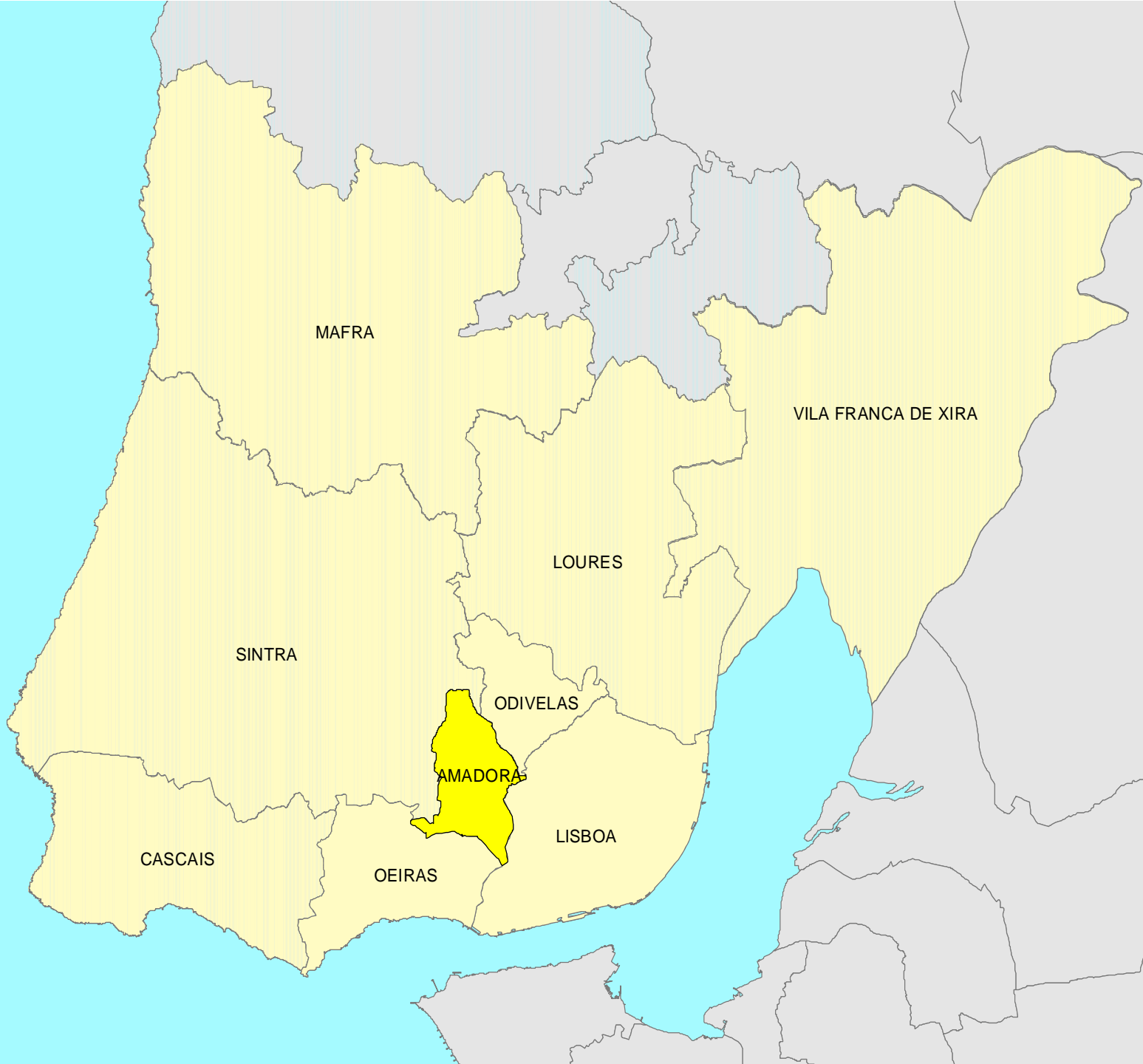
1.1. MAKING CITIES RESILIENT – MY CITY IS GETTING READY!





**2. AMADORA LOCAL CAMPAIGN
2010-2015**





MAFRA

VILA FRANCA DE XIRA

LOURES

SINTRA


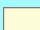
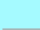
ODIVELAS

AMADORA

LISBOA

CASCAIS

OEIRAS

-  Concelho da Amadora
-  Área Metropolitana Norte de Lisboa
-  Concelhos adjacentes

0 5000 metros



AMADORA IS A PERIPHERY CITY OF LISBON
 [Dormitory town - Suburb]



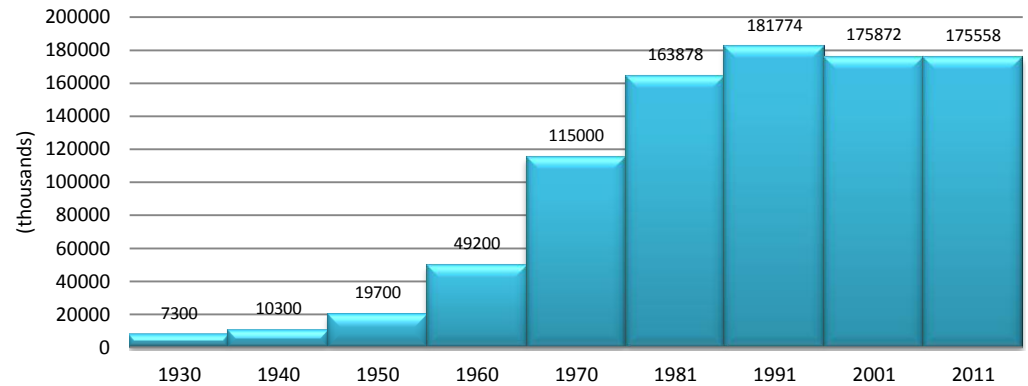
Enquadramento territorial

Divisão de Habitação (DREH) do IRLM
 Projecto: "Terra em Movimento, Espaço em Vida"

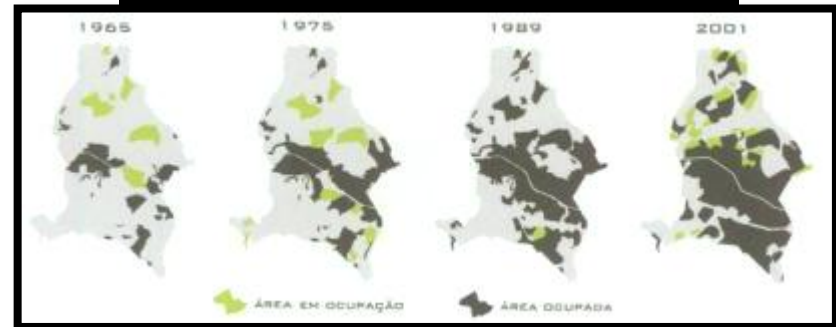
UNISDR

2. AMADORA LOCAL CAMPAIGN 2010-2015
 2.1. AMADORA MUNICIPALITY

Population (1930-2011)



POPULATION – 175 558 inhabitants (2011)
AREA – 24 sq km



Growing urban population and increased density, which put pressure on land and services;



2. AMADORA LOCAL CAMPAIGN 2010-2015

2.1. AMADORA MUNICIPALITY

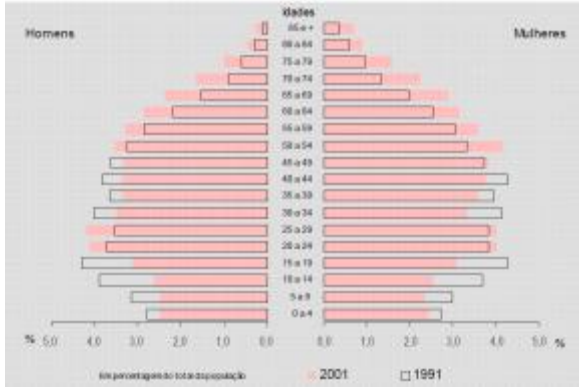


AMADORA POPULATION DENSITY
 7 363 inhabitants/sq km

LISBON METROPOLITAN AREA
 1 483 inhabitants/sq km



HIGH CONCENTRATION OF POPULATION IN A SMALL AREA

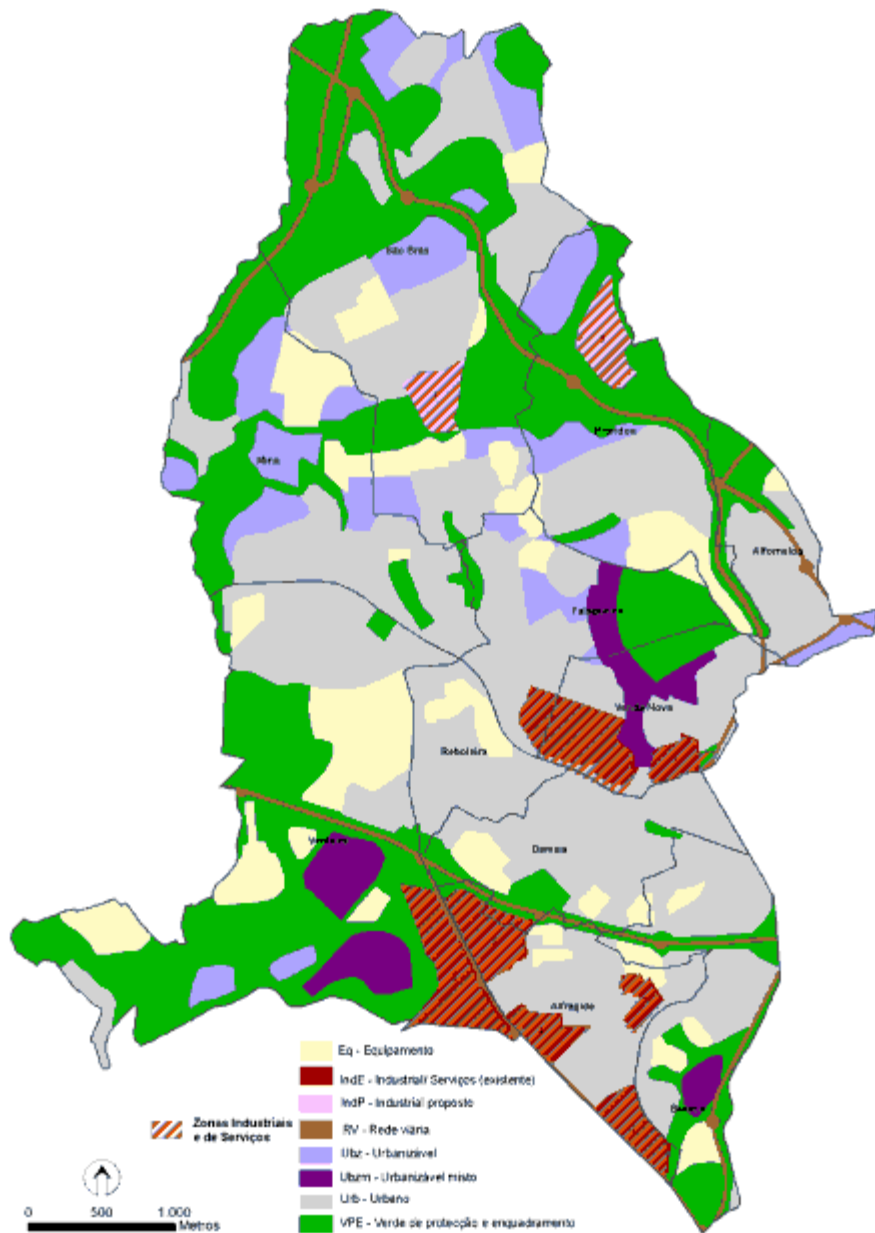


HIGH PERCENTAGE OF ADULT POPULATION

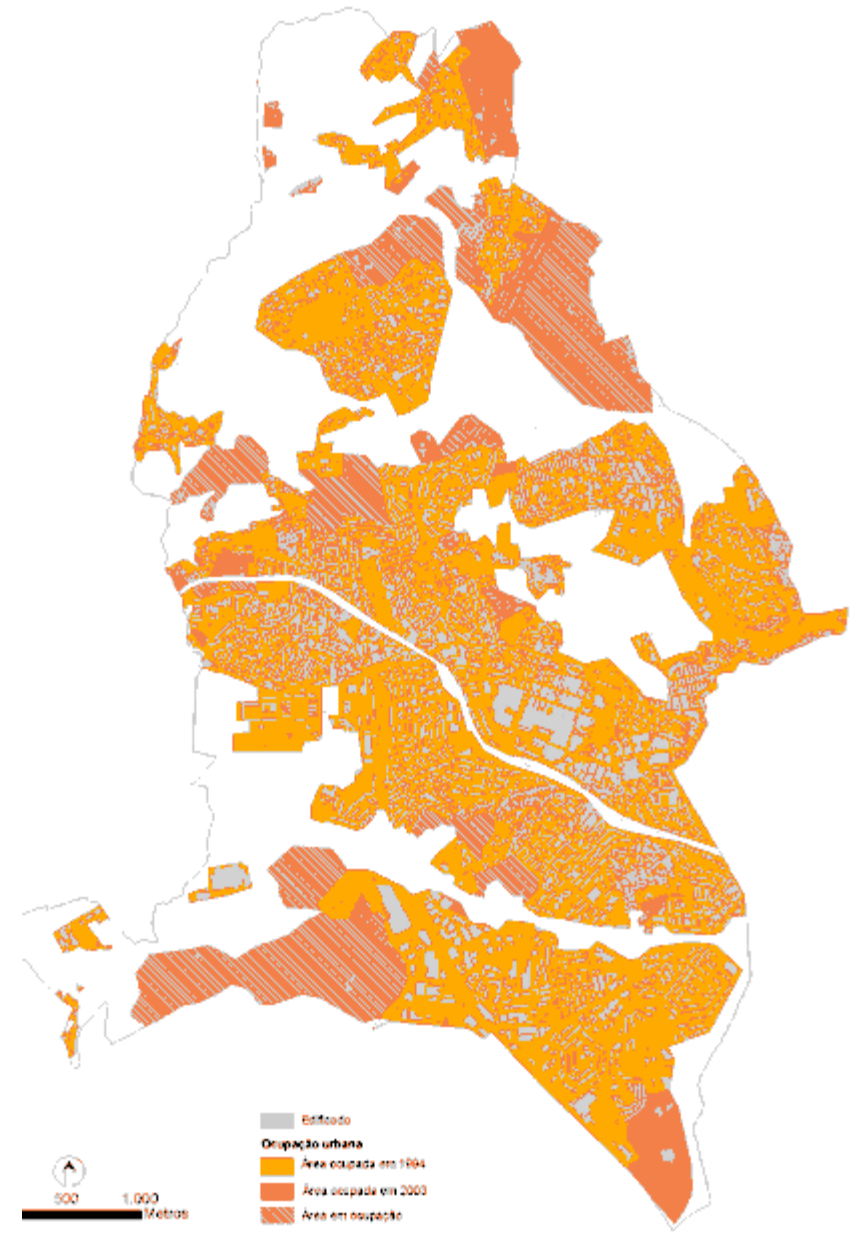


1950-2010
 INCREASING URBAN OCCUPATION
 =
 INCREASED NUMBER OF DISASTERS

URBAN OCCUPATION BY AREA



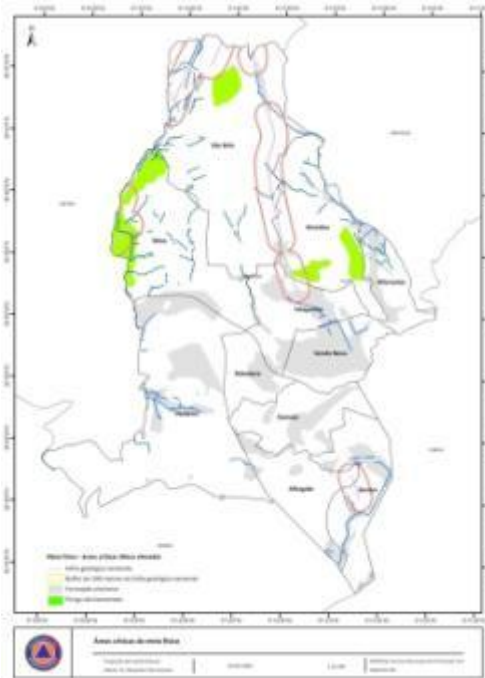
CONSOLIDATED URBAN AREA





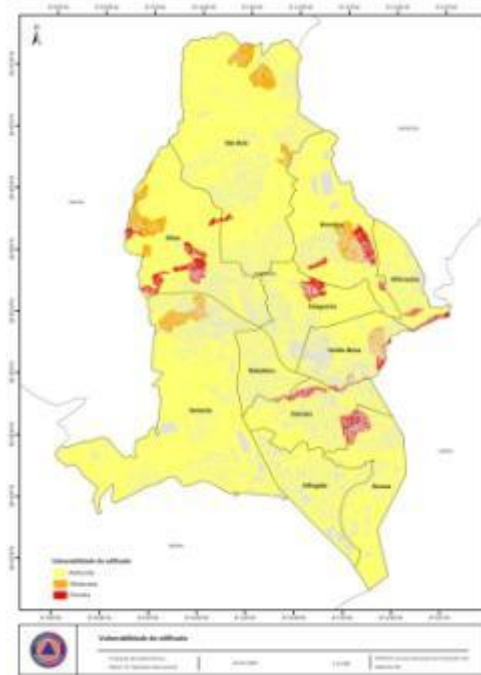
2. AMADORA LOCAL CAMPAIGN 2010-2015

2.1. AMADORA MUNICIPALITY



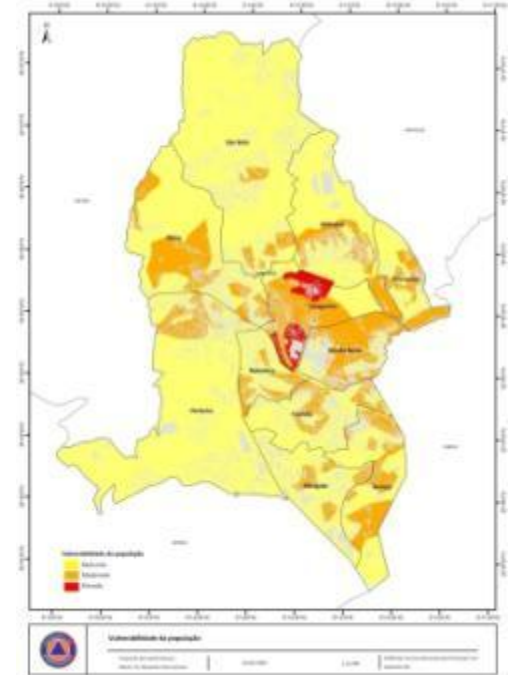
NATURAL PARTICULARITIES

- Alluvial geological formation
- Geological fault
- Small landslides
- Few forest area
- Four rivers basins



BUILDINGS

- High-concentration of buildings
- Some slums
- Some buildings in high state of degradation



POPULATION

- High concentration of population
- High concentration of the elderly population in the oldest areas



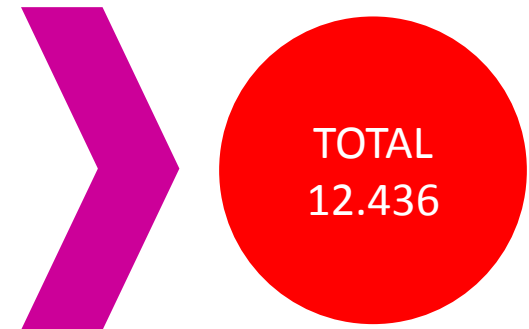
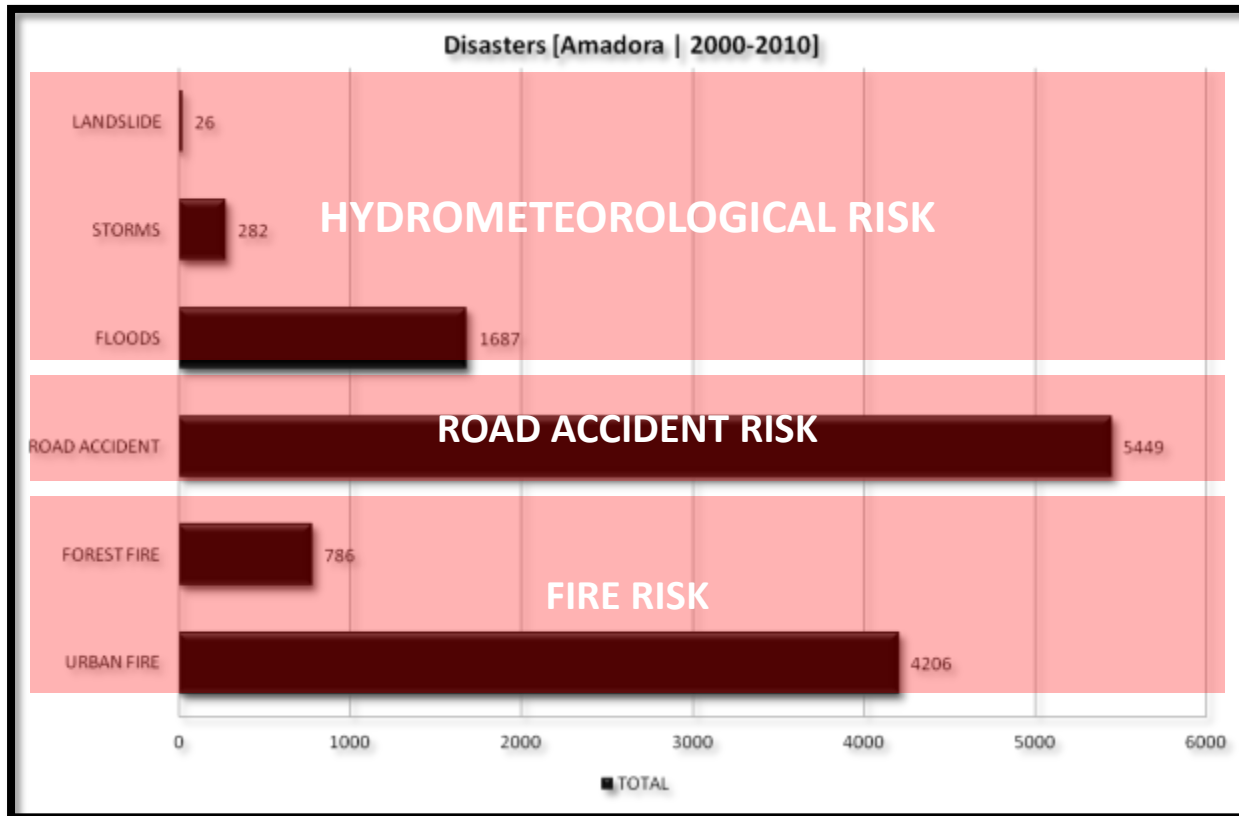
AMADORA





2. AMADORA LOCAL CAMPAIGN 2010-2015

2.2. CAMPAIGN FIRST STEPS



Frequent small and medium-impact disasters and single intense events disrupt community lifelines (food distribution, water supply, health care, transportation, waste disposal, and communications)



HAILSTORM
APRIL 29th [2011]



LANDSLIDE
JANUARY 20th [2010]



FOREST FIRE
JULY 29th [2009]



FLOOD
MAY 15th [2011]

FLOOD
NOVEMBER 2nd [2011]



FOREST FIRE
AUGUST 27th [2010]



ROAD ACCIDENT
NOVEMBER 21th [2010]

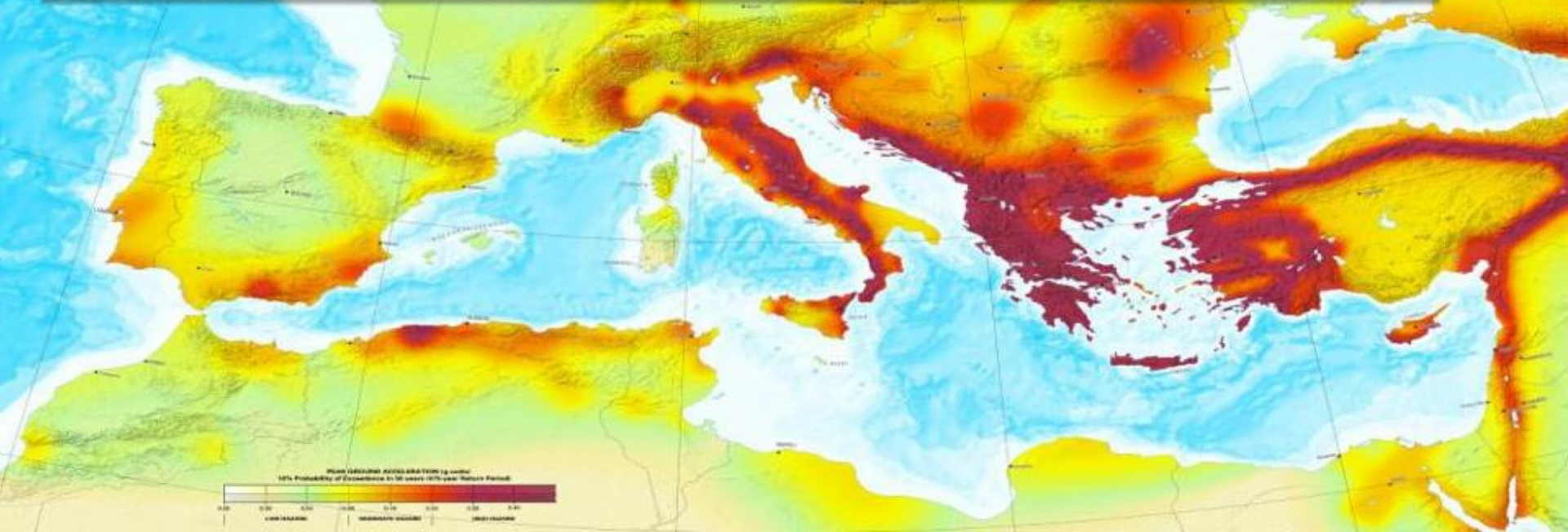


ROAD ACCIDENT
NOVEMBER 14th [2010]





YEAR	MAGNITUDE	DEPTH	EPICENTER	HUMAN LOSS	ECONOMIC DAMAGES
1017	6	-	Lower Tagus Valley Fault		
1344	6	-	Benavente Fault		
1356	7.5	-	Gorringe bank - boundary plates (EuroAsia-Africa)		
1512	6.3	-	Lower Tagus Valley Fault		
1531	7.1	-	Lower Tagus Valley Fault		Lisbon destroyed
1722	7.8	-	Guadalquivir Fault		
1748	6	-	Lower Tagus Valley Fault		
1755	8.5 – 8.7	-	Gorringe bank - boundary plates (EuroAsia-Africa)	12 000	Lisbon destroyed
1858	7.2	-	Lower Tagus Valley Fault		
1909	6.7	-	Lower Tagus Valley Fault		
1969	7.5	22 Metres	Gorringe bank - boundary plates (EuroAsia-Africa)	13	Several damages in buildings





2. AMADORA LOCAL CAMPAIGN 2010-2015

2.2. CAMPAIGN FIRST STEPS

Why did AMADORA joined the campaign?

1. To place the issue of risk, disaster and resilience on the municipality agenda;
2. Growing urban population and increased density, which put pressure on land and services;
3. Weak local governance and insufficient participation by stakeholders in planning and urban management;
4. The decline of ecosystems, due to human activities;
5. Adverse effects of climate change that will likely increase or decrease extreme temperatures and precipitation;
6. To build a institutional capacity. To identify, assess, monitor and reduce risks. To build a culture of safety and resilience.





2. AMADORA LOCAL CAMPAIGN 2010-2015

2.2. CAMPAIGN FIRST STEPS

The Ten Essentials for Making Cities Resilient Checklist

1. Put in place **organisation and coordination** to understand and reduce disaster risk, based on participation of citizen groups and civil society. Build local alliances. Ensure that all departments understand their role in disaster risk reduction and preparedness.
2. **Assign a budget** for disaster risk reduction and provide incentives for homeowners, low income families, communities, businesses and the public sector to invest in reducing the risks they face.
3. Maintain up to date data on hazards and vulnerabilities. **Prepare risk assessments** and use these as the basis for urban development plans and decisions, ensure that this information and the plans for your city's resilience are readily available to the public and fully discussed with them.
4. Invest in and maintain **critical infrastructure that reduces risk**, such as flood drainage, adjusted where needed to cope with climate change.
5. Assess the safety of all schools and health facilities and upgrade these as necessary.
6. Apply and enforce **realistic, risk compliant building regulations and land use planning principles**. Identify safe land for low income citizens and upgrade informal settlements, wherever feasible.
7. Ensure that **education programmes and training** on disaster risk reduction are in place in schools and local communities.
8. **Protect ecosystems and natural buffers** to mitigate floods, storm surges and other hazards to which your city may be vulnerable. Adapt to climate change by building on good risk reduction practices.
9. Install early warning systems and emergency management capacities in your city and hold regular public preparedness drills.
10. After any disaster, ensure that the **needs of the affected population are placed at the centre of reconstruction**, with support for them and their community organisations to design and help implement responses, including rebuilding homes and livelihoods.



	Milestone Phases	Steps
Phase One	Organizing and preparing to apply the Ten Essentials	1. Prepare institutional setting, raise awareness 2. Convene actors, formalize participatory process 3. Plan and execute the process
Phase Two	Diagnosis and assessment of the city's risk	4. Be acquainted with the city's risks 5. Conduct a risk assessment 6. Analyze the local environment and actors 7. Prepare an assessment report
Phase Three	Developing a safe and resilient city action plan	8. Define vision, objectives and main actions 9. Define programmes and projects 10. Institutionalize and sustain the disaster risk reduction plan
Phase Four	Implementing the plan	11. Implementation and resource mobilization 12. Ensure broad participation and ownership
Phase Five	Monitoring and follow-up	13. Monitor, follow up and evaluate the plan 14. Disseminate and promote the plan

COORDINATION = organization
MOBILIZATION = convince, connect
PARTICIPATION = learn, inform











RESILIENCE PROMOTION



2. AMADORA LOCAL CAMPAIGN 2010-2015

2.3. IMPLEMENTATION OF TEN ESSENTIALS

The Ten Essentials for Making Cities Resilient Checklist

-  1. Put in place **organisation and coordination** to understand and reduce disaster risk, based on participation of citizen groups and civil society. Build local alliances. Ensure that all departments understand their role in disaster risk reduction and preparedness.
-  2. **Assign a budget** for disaster risk reduction and provide incentives for homeowners, low income families, communities, businesses and the public sector to invest in reducing the risks they face.
-  3. Maintain up to date data on hazards and vulnerabilities. **Prepare risk assessments** and use these as the basis for urban development plans and decisions, ensure that this information and the plans for your city's resilience are readily available to the public and fully discussed with them.
-  4. Invest in and maintain **critical infrastructure that reduces risk**, such as flood drainage, adjusted where needed to cope with climate change.
-  5. Assess the safety of all schools and health facilities and upgrade these as necessary.
-  6. Apply and enforce **realistic, risk compliant building regulations and land use planning principles**. Identify safe land for low income citizens and upgrade informal settlements, wherever feasible.
-  7. Ensure that **education programmes and training** on disaster risk reduction are in place in schools and local communities.
-  8. **Protect ecosystems and natural buffers** to mitigate floods, storm surges and other hazards to which your city may be vulnerable. Adapt to climate change by building on good risk reduction practices.
-  9. Install early warning systems and emergency management capacities in your city and hold regular public preparedness drills.
-  10. After any disaster, ensure that the **needs of the affected population are placed at the centre of reconstruction**, with support for them and their community organisations to design and help implement responses, including rebuilding homes and livelihoods.



	Milestone Phases	Steps
Phase One	Organizing and preparing to apply the Ten Essentials	1. Prepare institutional setting, raise awareness 2. Convene actors, formalize participatory process 3. Plan and execute the process
Phase Two	Diagnosis and assessment of the city's risk	4. Be acquainted with the city's risks 5. Conduct a risk assessment 6. Analyze the local environment and actors 7. Prepare an assessment report
Phase Three	Developing a safe and resilient city action plan	8. Define vision, objectives and main actions 9. Define programmes and projects 10. Institutionalize and sustain the disaster risk reduction plan
Phase Four	Implementing the plan	11. Implementation and resource mobilization 12. Ensure broad participation and ownership
Phase Five	Monitoring and follow-up	13. Monitor, follow up and evaluate the plan 14. Disseminate and promote the plan

AMADORA LOCAL CAMPAIGN KEY PRIORITIES

- 1. RISK, HAZARD AND VULNERABILITY ASSESSMENT;
- 2. INFORMATION, TRAINING AND AWARENESS, IN ORDER TO REDUCE THE NUMBER OF DISASTERS AND RISKS.



RESILIENCE MUNICIPAL PLAN

 Positive progress  Need to improve



ESSENTIAL 1 ↑

Put in place organization and coordination to understand and reduce disaster risk, based on participation of citizen groups and civil society.

2. AMADORA LOCAL CAMPAIGN 2010-2015
 2.3. IMPLEMENTATION OF TEN ESSENTIALS

LEADER

MAYOR
Councilman

➔ **POLITICAL SUPPORT!**





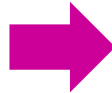
ESSENTIAL 1

Put in place organization and coordination to understand and reduce disaster risk, based on participation of citizen groups and civil society.

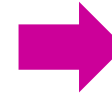
2. AMADORA LOCAL CAMPAIGN 2010-2015

2.3. IMPLEMENTATION OF TEN ESSENTIALS

**PUBLIC PRESENTATION
[COMMUNITY/STAKEHOLDERS]**



TO CONVINC
[Establish a collaborative strategy]



TO CONNECT
[Involve different actors]



STRONG ALLIANCES AND BROAD PARTICIPATION!!!



PUBLIC PRESENTATIONS
"AMADORA LOCAL
CAMPAIGN"





ESSENTIAL 2 

Assign a budget for disaster risk reduction and provide incentives for homeowners, low income families, communities, businesses and the public sector to invest in reducing the risks they face.

2. AMADORA LOCAL CAMPAIGN 2010-2015

2.3. IMPLEMENTATION OF TEN ESSENTIALS

Portugal is under international financial assistance (FMI/UE)

National – Local Level

Amadora Local Campaign

Amadora has few mechanisms to ensure a financial disaster. It should be a priority to develop and establish funding mechanisms. Although there is some uncertainty of the impacts that climate change will have on the municipality. It is necessary to involve more the private sector in creating a fund for before, during and post disaster.

The fund should also be used to encouraged environmentally sustainable projects (buildings and green transport and energy-efficient), new technologies to the risk assessment and to **encourage the relocation of people and activities from the areas of highest risk.**

CHALLENGE FOR 2013-2015

Budget to encourage public and private sector in disaster risk reduction

Discussion to consider a contingency fund

Need to ensure a strategy to access funds from private sector or individuals

Improve public recognition and awards to good city practices

Discussion to put in place incentives (local taxes, subsidies) for risk reduction

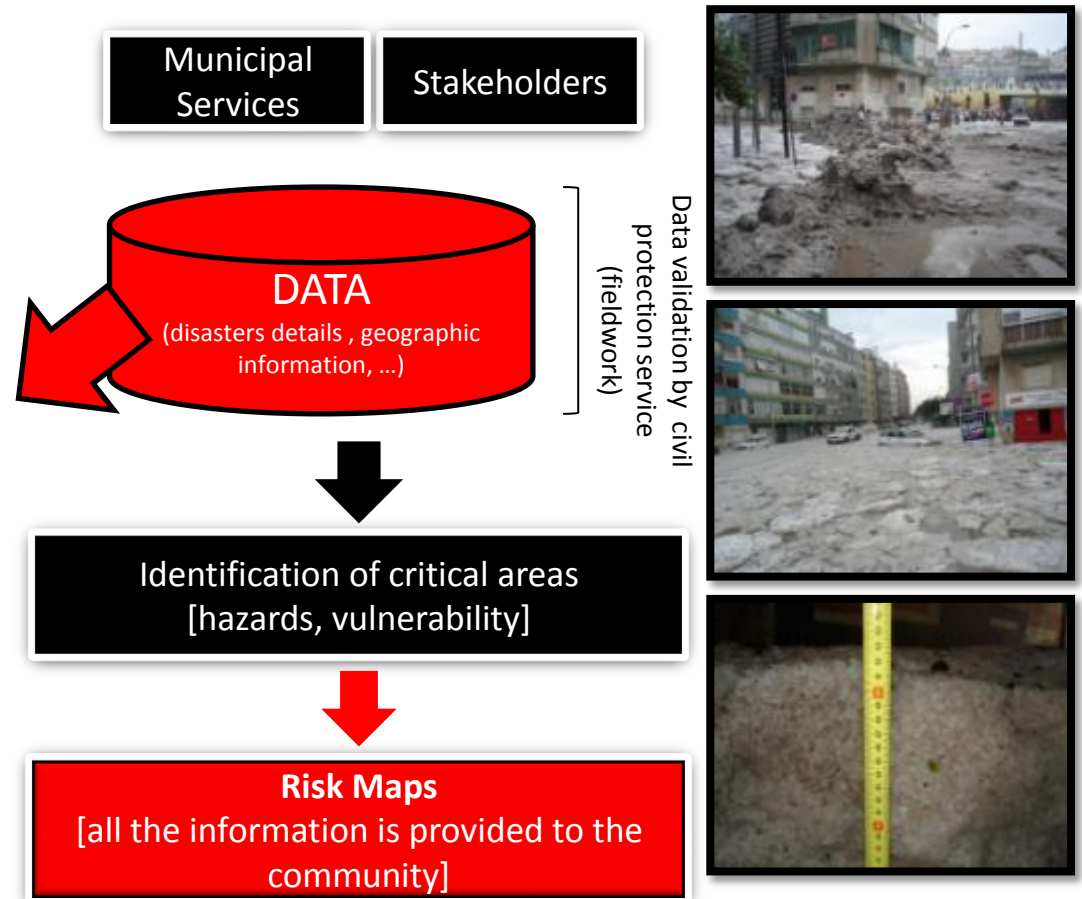
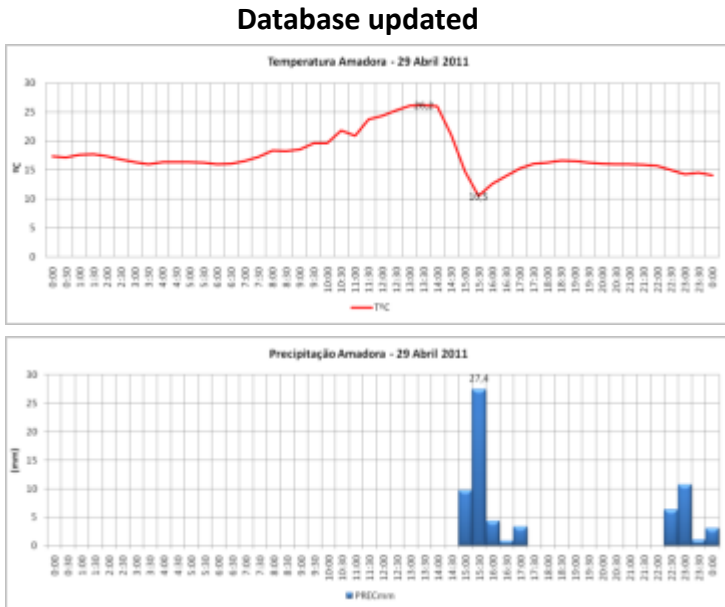


ESSENTIAL 3 ↑

Maintain up to date data on hazards and vulnerabilities. Prepare risk assessments and use these as the basis for urban development plans and decisions.

2. AMADORA LOCAL CAMPAIGN 2010-2015

2.3. IMPLEMENTATION OF TEN ESSENTIALS



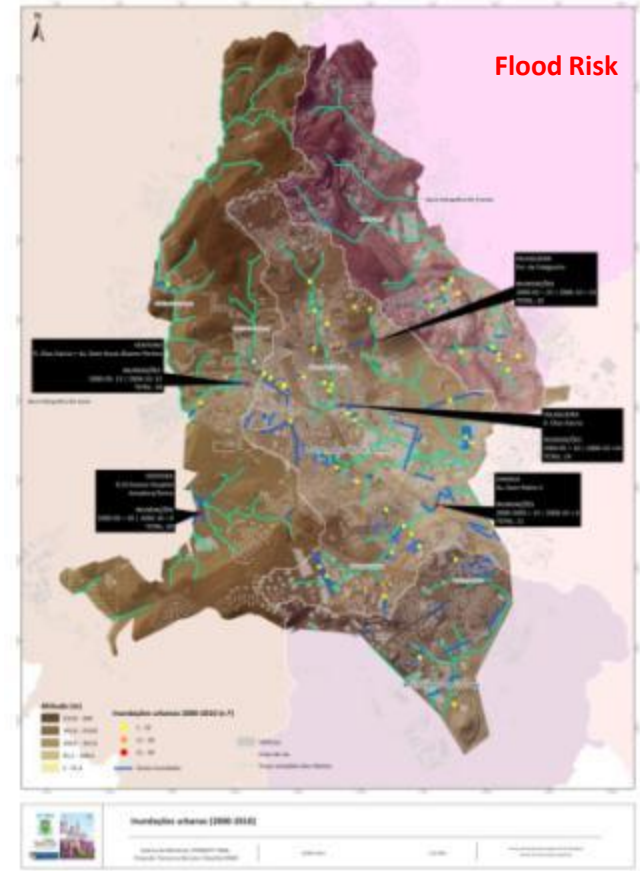
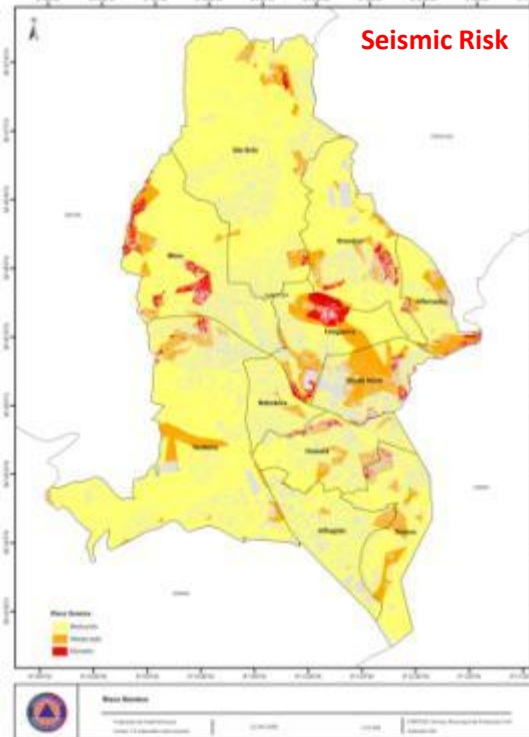
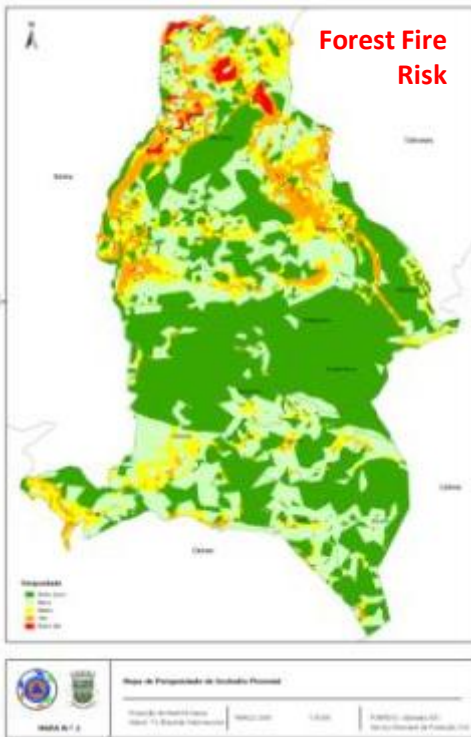


ESSENTIAL 3 ↑

Maintain up to date data on hazards and vulnerabilities. Prepare risk assessments and use these as the basis for urban development plans and decisions.

2. AMADORA LOCAL CAMPAIGN 2010-2015

2.3. IMPLEMENTATION OF TEN ESSENTIALS



RISK ASSESSMENT INTEGRATE URBAN PLANS AND DECISIONS!



ESSENTIAL 3 ↑

Maintain up to date data on hazards and vulnerabilities. Prepare risk assessments and use these as the basis for urban development plans and decisions.

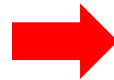
2. AMADORA LOCAL CAMPAIGN 2010-2015

2.3. IMPLEMENTATION OF TEN ESSENTIALS

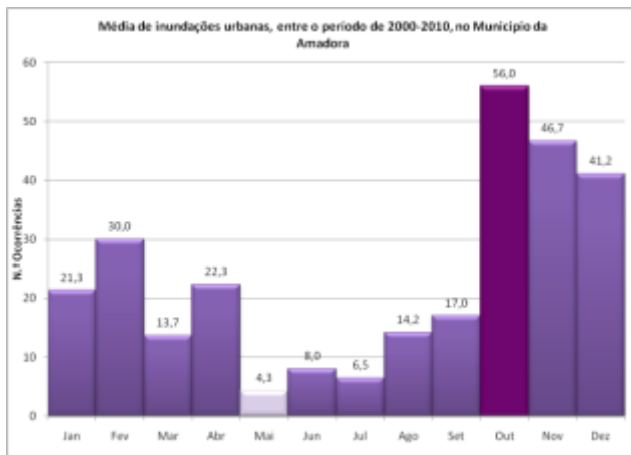
STUDIES AND PLANS IN PROGRESS

DISASTERS IN AMADORA MUNICIPALITY (2000-2010)

[support by TERCUD – academic research]



Database of disaster losses and a Geographic Information System (GIS) to map hazards, vulnerabilities, the exposure of people and assets and capacities provide the foundation for the risk assessment.

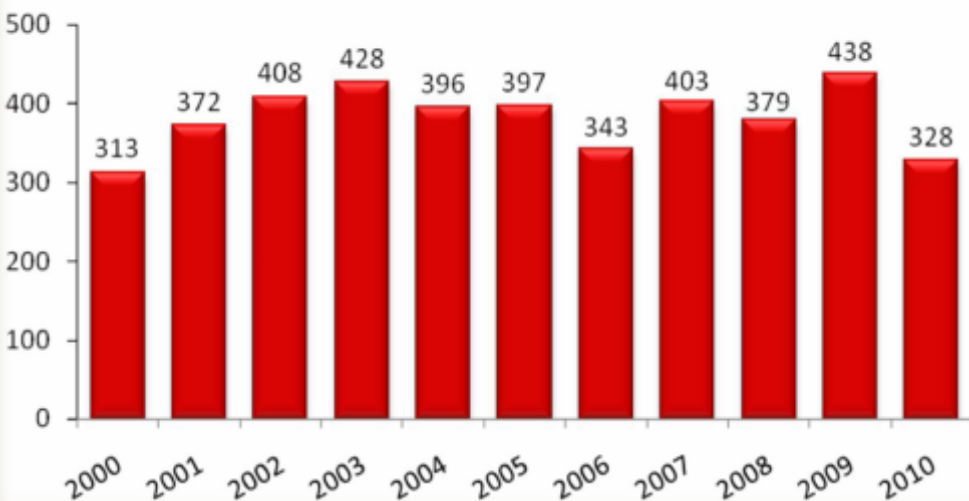


STUDY TARGETS

- * Historic loss data (fire, flood, landslide, gas explosion, extreme weather);
- * Hazard assessment;
- * Identification of high, medium, low risk areas.

2000 - 2010

Total de Incêndios Anuais



INCÊNDIOS NA AMADORA 2000-2010

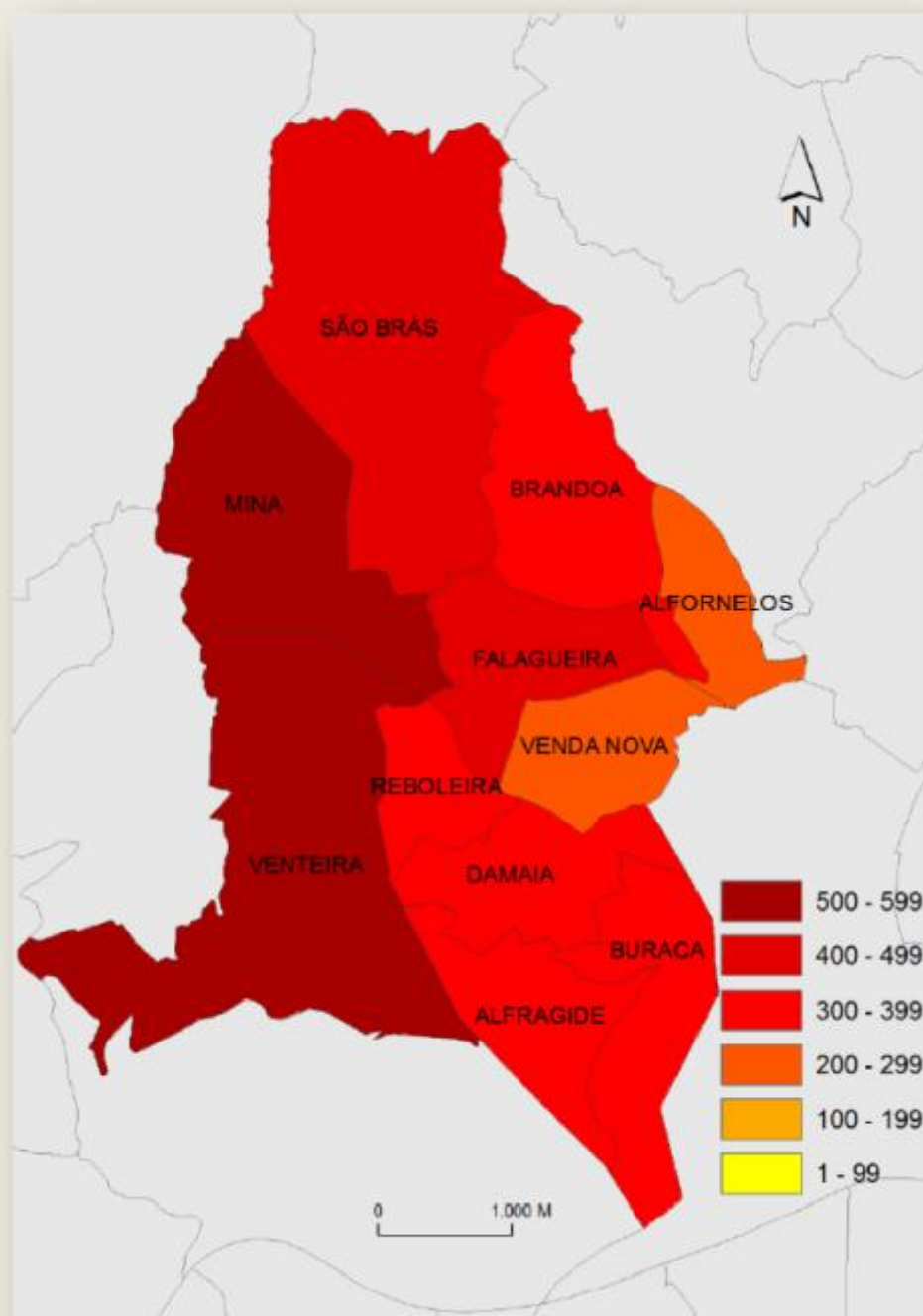
2000-05 2006-10 2000-10

Edifícios	Habitação	758	474	1232
	Serviços	10	14	24
	Escolares	8	5	13
	Saúde	1	2	3
	Comércio	38	20	58
	Indústria	38	37	75
	Cultura/Lazer	4	1	5

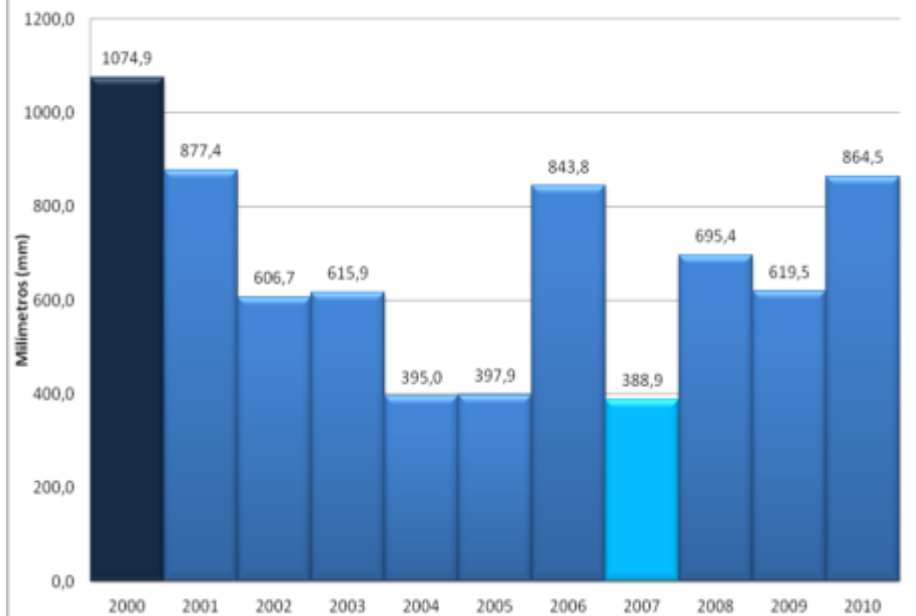
Detritos/Equipamentos 1136 1096 2232

Outros 321 242 563

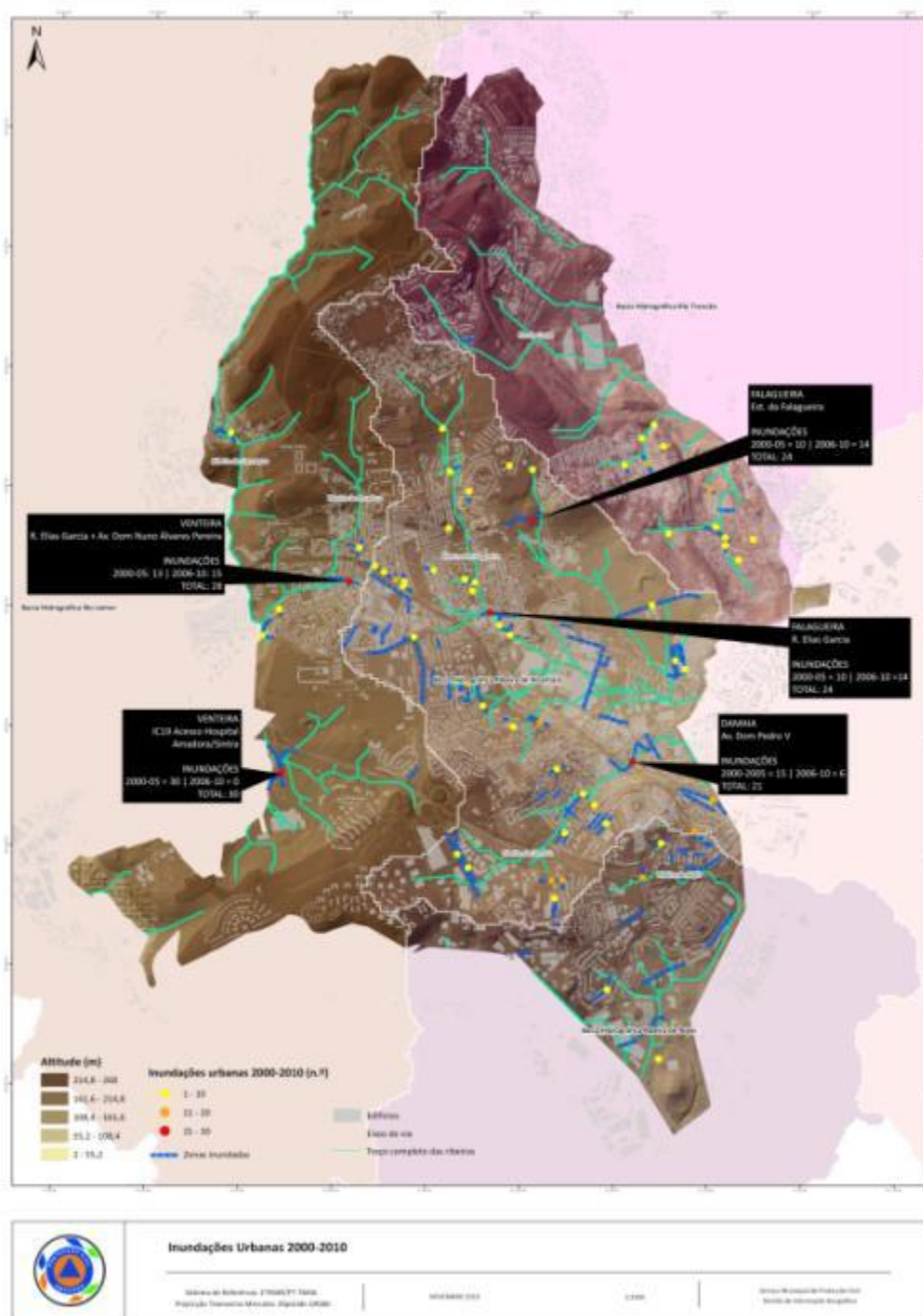
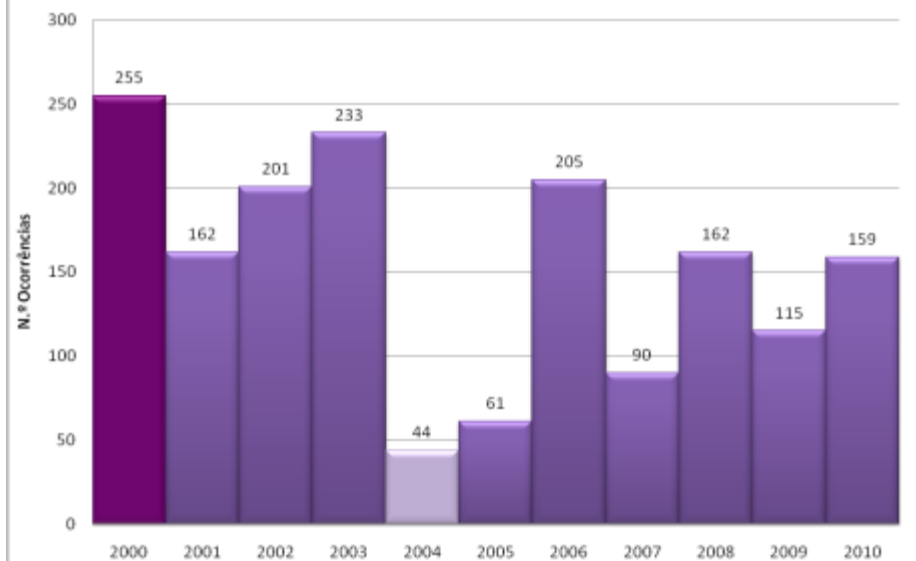
TOTAL 2314 1891 4205



Precipitação total anual, entre o período 2000-2010, no Município da Amadora



Total de inundações urbanas, entre o período 2000-2010, no Município da Amadora



Inundações Urbanas 2000-2010



FIELD WORK
"DATA VALIDATION WITH
ACADEMIA RESEARCHERS"





ESSENTIAL 3 ↑

Maintain up to date data on hazards and vulnerabilities. Prepare risk assessments and use these as the basis for urban development plans and decisions.

2. AMADORA LOCAL CAMPAIGN 2010-2015
2.3. IMPLEMENTATION OF TEN ESSENTIALS

STUDIES AND PLANS IN PROGRESS

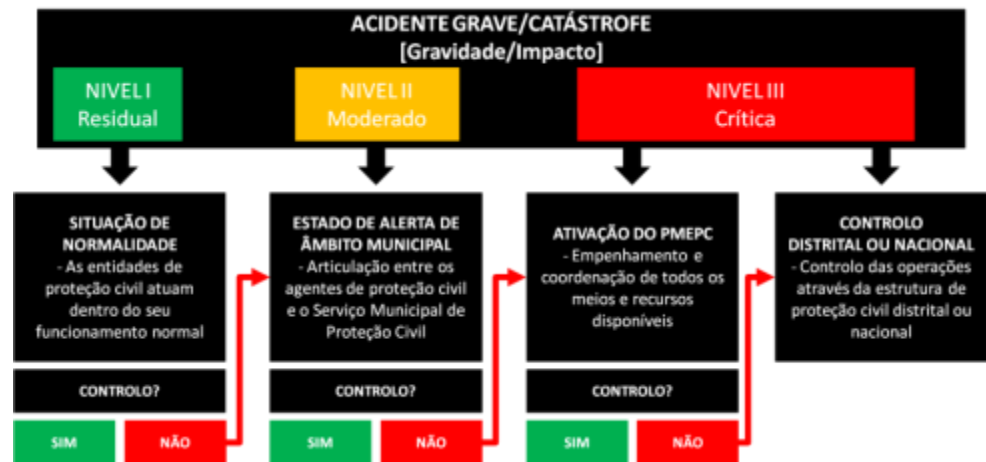
Identification of the capacities and resources available at municipal level.



**MUNICIPAL EMERGENCY PLAN
 2012-2013**

PLAN TARGETS

- * Update risk assessment;
- * Prioritize actions based on land-use zoning, investment decisions and worst scenarios for emergency preparedness;
- * Creation of a geographic information system and monitoring system to include input data from all actors;
- * Define the roles and responsibilities of departments and services involved in risk assessment.





AMADORA MUNICIPAL EMERGENCY PLAN

DATA

Collecting, manipulating and
organizing data

communication, education,
awareness and knowledge
representation

Knowledge (!)

...Data High Quality...

ASSESSMENT

... Guidelines...


RECOVERY AND
RELIEF
ORGANIZATION

Characterization of the
territory

Identification of risk,
hazard and
vulnerability

Emergency services
mission

Scenarios, resources,
rescue operations,
information to the
public, ...





ESSENTIAL 4

Invest in and maintain **critical infrastructure** that reduces risk, such as flood drainage, adjusted where needed to cope with climate change

TO INVEST

1. WE need to invest in critical infrastructure;
2. WE need to develop resilient new infrastructure.

TO MAINTAIN

1. Existing key assets for a well functioning and healthy city;
2. Communication systems, roads, hospital, emergency services, energy and water supplies.



2. AMADORA LOCAL CAMPAIGN 2010-2015

2.3. IMPLEMENTATION OF TEN ESSENTIALS

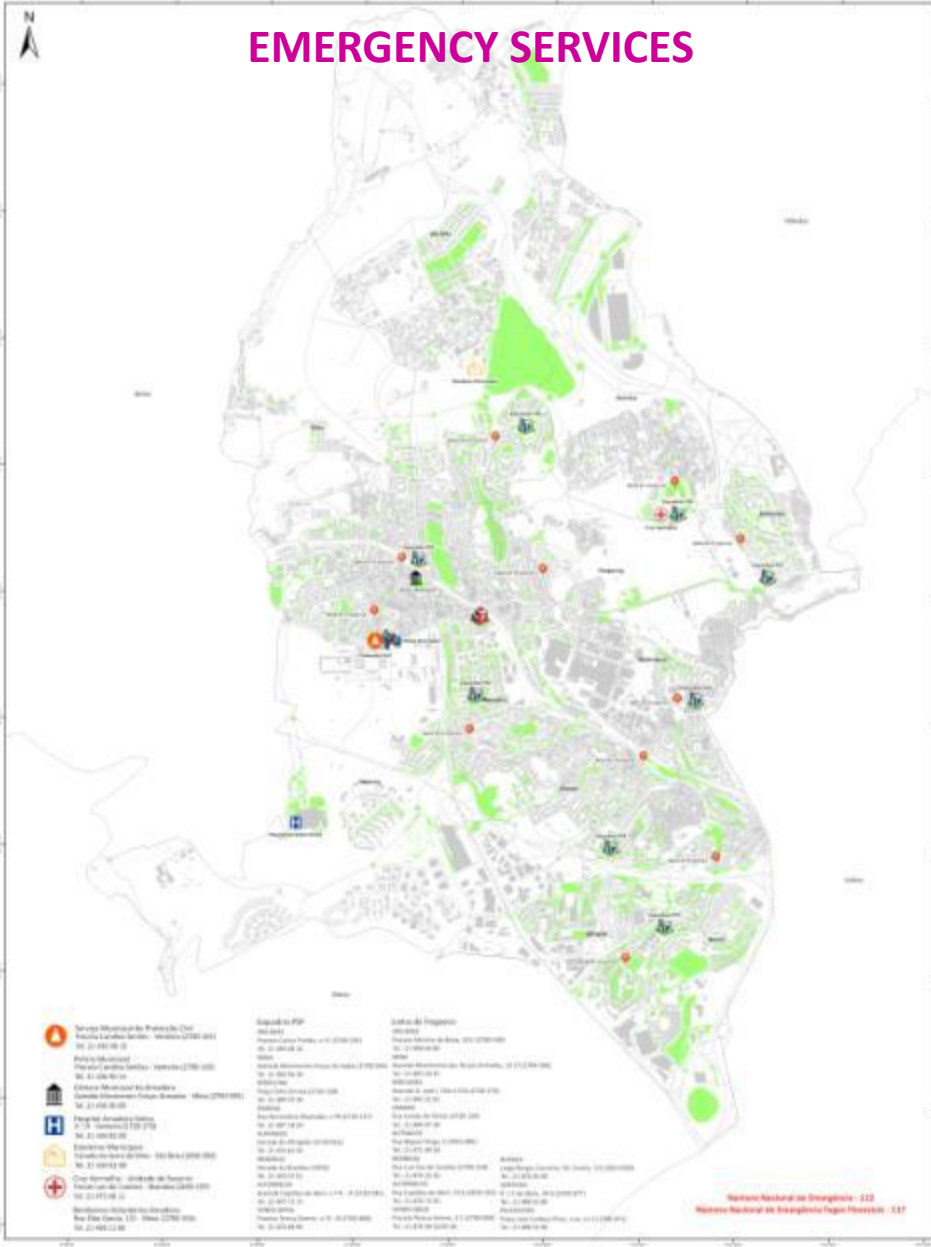
FLOODS!



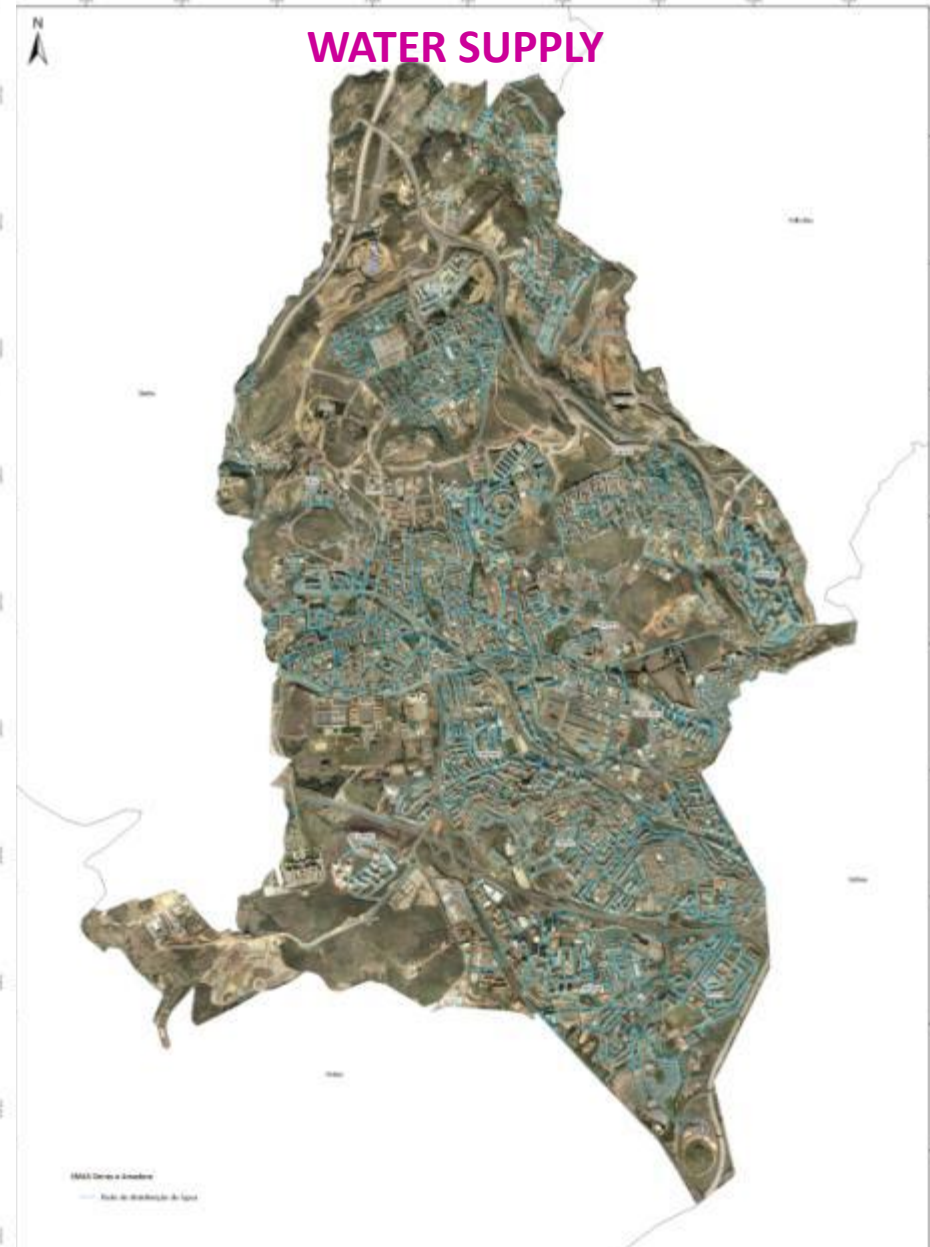
- Occur by under sizing of the drainage;
- Should be made an investment in efficient drainage network taking into account historic rainfall and demographic realities (create natural water retention basins).

NEED TO INVEST IN SOME OLD STRUCTURES!

EMERGENCY SERVICES



WATER SUPPLY



Instalações Proteção Civil

Sistema de Informação SIGMISPT 2008
Município Vila Verde - Vila Verde 4700-000

2023/06/01

1:00,000

Centro Municipal de Proteção Civil
Rua da Liberdade, Vila Verde



Rede de distribuição de Água

Sistema de Informação SIGMISPT 2008
Município Vila Verde - Vila Verde 4700-000

2023/06/01

1:00,000

Centro Municipal de Proteção Civil
Rua da Liberdade, Vila Verde



ESSENTIAL 5 ↑

Assess the safety of all schools and health facilities and upgrade these as necessary.

ESSENTIAL 6 ↑

Apply and enforce realistic, risk compliant building regulations and land use planning principles.

**RISK REDUCTION IN THE STAKEHOLDERS FACILITIES
 (SCHOOLS, HEALTH, MUNICIPAL SERVICES, ...)**

- METHODOLOGY**
- 1st STEP- Identification of non-conformities and propose improvements based on the Legal Framework for Fire Safety in Buildings (national legislation);
 - 2nd STEP - Technical support to implement action plans and programmes (physical resilience and robustness of stakeholders facilities) ;
 - 3rd STEP - Training / Awareness for employees and users of facilities;
 - 4th STEP - Thematic workshops on risks and safety;
 - 5th STEP - Active participation in local campaign events.

**2. AMADORA LOCAL CAMPAIGN 2010-2015
 2.3. IMPLEMENTATION OF TEN ESSENTIALS**

PUBLICATIONS



Self-protection measures for schools



Household emergency plan





TRAINING
"IMPROVE STAKEHOLDERS
FACILITIES"





ESSENTIAL 7 ↑
 Ensure that education programmes and training on disaster risk reduction are in place in schools and local communities.

2. AMADORA LOCAL CAMPAIGN 2010-2015
 2.3. IMPLEMENTATION OF TEN ESSENTIALS

STRONG FOCUS ON THE SCHOOL/LOCAL COMMUNITY TRAINING



School program "Prevent and protect!"
 Ages 4-11 years old



Mascot "RISKY"



School program "Civil Protection Club!"
 Ages 11-18 years old



ESSENTIAL 7 ↑

Ensure that education programmes and training on disaster risk reduction are in place in schools and local communities.

2. AMADORA LOCAL CAMPAIGN 2010-2015

2.3. IMPLEMENTATION OF TEN ESSENTIALS

STRONG FOCUS ON THE SCHOOL/LOCAL COMMUNITY TRAINING



School program "Prevent and protect!"
 Ages 4-11 years old



DISASTER EXERCISES
 (earthquake, flood, fire, ...)



2012
 6 schools
 350 students involved
 Stakeholders involved

TRAINING
"PREVENT AND PROTECT"



TRAINING
"PREVENT AND PROTECT"





ESSENTIAL 7 ↑

Ensure that education programmes and training on disaster risk reduction are in place in schools and local communities.

2. AMADORA LOCAL CAMPAIGN 2010-2015
 2.3. IMPLEMENTATION OF TEN ESSENTIALS

STRONG FOCUS ON THE SCHOOL/LOCAL COMMUNITY TRAINING

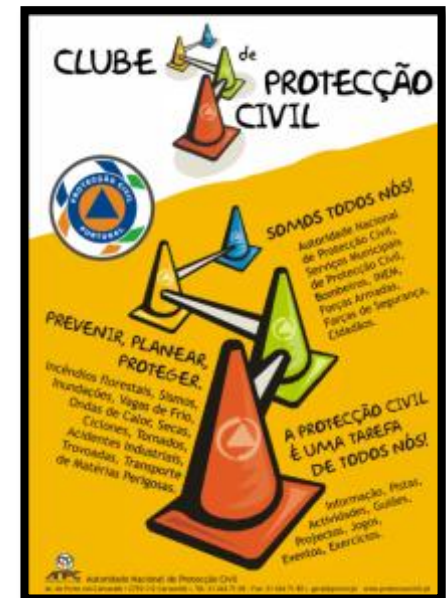
PRESENTATIONS ABOUT MUNICIPALITY RISKS
DISASTERS EXERCISES
 (earthquake, flood, fire, ...)



2012

4 schools | 107 presentations

1200 students involved | Stakeholders involved



School program “Civil Protection Club!”
 Ages 11-18 years old

TRAINING
"CIVIL PROTECTION CLUB"





SCHOOL WORKSHOPS
"RISKS AND DISASTERS"





ESSENTIAL 7

Ensure that education programmes and training on disaster risk reduction are in place in schools and local communities.

2. AMADORA LOCAL CAMPAIGN 2010-2015 2.3. IMPLEMENTATION OF TEN ESSENTIALS

STRONG FOCUS ON THE SCHOOL/LOCAL COMMUNITY TRAINING



We have **4 Civil Protection School Groups!**

Teachers and students develops risk and disaster issues in schools

"Civil Protection School Groups!"

Ages 11-18 years old

CIVIL PROTECTION SCHOOL GROUP





ESSENTIAL 7

Ensure that education programmes and training on disaster risk reduction are in place in schools and local communities.

2. AMADORA LOCAL CAMPAIGN 2010-2015 2.3. IMPLEMENTATION OF TEN ESSENTIALS

STRONG FOCUS ON THE SCHOOL/LOCAL COMMUNITY TRAINING



- Earthquake National Drill;
- Heatwave information sessions;
- Thematic workshops;
- Conference IDDR;
- Public survey about risk perception;
- Drills;
- Annual festivities;

WE promote a public awareness campaign on citizen safety and disaster risk reduction;
WE encourage local citizens groups, school, mass media and private sector to join the campaign;
WE work with educational authorities;
WE focus on training priority target groups as municipal departments and emergency management;

WORKSHOPS
"RISKS AND DISASTERS IN
AMADORA MUNICIPALITY"



WORKSHOPS
"PREVENT AND PROTECT"



WORKSHOPS
"PREVENT AND PROTECT"



INFORMATION SESSION
"SELF-PROTECTION
MEASURES FOR SCHOOLS"



WORKSHOPS
"PREVENT AND PROTECT"



NATIONAL DRILL
"EARTHQUAKE"



NATIONAL DRILL
"EARTHQUAKE"



WORKSHOPS
"PREVENT AND PROTECT"



VI

Conferência

DIA INTERNACIONAL PARA A REDUÇÃO DE DESASTRES NATURAIS

Edifício dos Auditórios da Academia Militar Amadora



12 de Outubro de 2011

Design: A. Guedes

ALTO PATROCÍNIO



IBDR

ORGANIZAÇÃO



AFÍLIOS



FCSH FACULDADE DE CIÊNCIAS SOCIAIS E HUMANAS



Inscrições: protecao.civil@cm-amadora.pt

ANNUAL CONFERENCE 2011
"INTERNACIONAL DAY FOR
DISASTER REDUCTION"

ANNUAL CONFERENCE 2011
"INTERNACIONAL DAY FOR
DISASTER REDUCTION"





ANNUAL CONFERENCE 2011
"INTERNACIONAL DAY FOR
DISASTER REDUCTION"





VII Conferência Dia Internacional para a Redução de Desastres Naturais



Auditório dos Recreios da Amadora
15 de Outubro 2012



Inscrições: protecao.civil@cm-amadora.pt



VII CONFERÊNCIA

“DIA INTERNACIONAL PARA A REDUÇÃO DE DESASTRES NATURAIS”

15 OUTUBRO 2012

Auditório dos Recreios da Amadora

RECEÇÃO DOS PARTICIPANTES (9.00h-9.30h)

- Credenciação

- Entrega de documentação

SESSÃO DE ABERTURA (9.30h – 10.00h)

- Joaquim Moreira Raposo (Presidente da Câmara Municipal da Amadora)

- Prof. Dr.ª Maria José Roxo (Universidade Nova de Lisboa-Faculdade de Ciências Sociais e Humanas)

- Prof. Dr. Zoran Roca (Universidade Lusófona de Humanidades e Tecnologias - Faculdade de Ciências Sociais e Humanas)

- Comandante Elísio Oliveira (Comandante Distrital de Operações de Socorro de Lisboa)

PARTE I

“O papel da mulher na redução do risco de desastre” (10.00h-13.15h)

Moderadora: Dr.ª Úrsula Carrasco (Campanha Local “Amadora Resiliente”)

10.00h-10.30h – Eng.ª Patrícia Gaspar (ANPC)

Resposta operacional em situação de desastre

10.30h-11.00h – Prof.ª Margarida Queirós (IGOT – Universidade de Lisboa)

Complexidade, risco e território: a multifacetada espacialidade dos riscos

11.00h-11.10h – Debate

11.10h-11.30h – Pausa para café

11.30h-12.00h – Dr.ª Marinela Velloso (ANAFS)

A vida num Campo de Refugiados- Uma experiência

12.00h-12.30h – Eng.ª Maria Luísa Sousa (LNEC)

Risco sísmico e a sua mitigação

12.30h-13.00h – Dr.ª Rita Jacinto (FCUL)

Resiliência ao nível das alterações climáticas

13.00h-13.15h - Debate

13.15h-14.45h – Almoço

PARTE II

WORKSHOPS TEMÁTICOS (14.45h-17.00h)

Alterações Climáticas [EcoEspaço – Parque Central]

Os Cinco Gestos de Socorro [ANAFS – Parque Delfim Guimarães]

Meios de combate a incêndios [Bombeiros Voluntários da Amadora – Quartel]



SECRETARIADO DA CONFERÊNCIA
Serviço Municipal de Protecção Civil da Amadora
Praceta Carolina Simões | 2700-163 Amadora
Tel. +351 21 494 86 38 | Telex. +351 96 834 04 68 | Fax. +351 21 494 64 51
e-mail: protecao.civil@cm-amadora.pt





ESSENTIAL 7 ↑

Ensure that education programmes and training on disaster risk reduction are in place in schools and local communities.

2. AMADORA LOCAL CAMPAIGN 2010-2015
2.3. IMPLEMENTATION OF TEN ESSENTIALS

PUBLIC SURVEY ABOUT RISK PERCEPTION IN MUNICIPALITY
[IN PROGRESS]

WORLD DISASTER REDUCTION CAMPAIGN 2010/15
 Making Cities Resilient: MY CITY IS GETTING READY!

CAMPAIGNA LOCAL UNISDR
 “Sempre em Movimento, Amadora é Resiliente”

INQUÉRITO

A campanha “World Disaster Reduction Campaign 2010/15 Making Cities Resilient” da UNISDR
 Unidos Aborda a necessidade dos comunidades locais enfrentarem o problema de catástrofe e o
 trabalho associado a desenvolverem um conjunto de locais resilientes que lhes permita resistir,
 preparar-se e recuperar (resiliência).

Sabendo-se que é fundamental estar preparado e organizado antes, durante e depois do desastre, o
 objetivo principal desta campanha ao nível local (Município de Amadora) centra-se é no domínio
 da informação, formação e sensibilização da população, de modo a diminuir o número de
 vítimas e os danos materiais.

Como tal, consideramos que nos identificamos, de acordo com os seus conhecimentos e informações, os
 riscos (naturais e tecnológicos) e respectivas vulnerabilidades, existentes no Município de Amadora.

Nome:	Idade:	Sexo:	EScolaridade:	Profissão:
	<35	CB-M	ES-BA	ES-BA
	35-49	F	ES-BA	ES-BA
	50-64	M	ES-BA	ES-BA
	65-79	F	ES-BA	ES-BA
	80+	M	ES-BA	ES-BA

3. Preencha o seguinte formulário de acordo com as informações/sensibilizações que detém sobre os
 tipos de riscos existentes no Município de Amadora. Classifique a sua perceção de risco de acordo com as
 possíveis consequências de acordo com a seguinte tabela (escala de 1 a 4):

TIPO DE RISCO	PERIÓDICO DE OCORRÊNCIA	POSSÍVEL CONSEQUÊNCIA
1. Sismos		
2. Dáta de Fria		
3. Inundações / Surtos		
4. Climas		
5. Tornado		
6. Incêndios		
7. Furtos		
8. Queda de Cabelo		
9. Participação humana		
10. Queda de Árvores		
11. Inundações		
12. Inundações		
13. Hidrologia		
14. Hidrologia		
15. Hidrologia		
16. Hidrologia		
17. Hidrologia		
18. Hidrologia		
19. Hidrologia		
20. Hidrologia		
21. Hidrologia		
22. Hidrologia		
23. Hidrologia		
24. Hidrologia		
25. Hidrologia		
26. Hidrologia		
27. Hidrologia		
28. Hidrologia		
29. Hidrologia		
30. Hidrologia		
31. Hidrologia		
32. Hidrologia		
33. Hidrologia		
34. Hidrologia		
35. Hidrologia		
36. Hidrologia		
37. Hidrologia		
38. Hidrologia		
39. Hidrologia		
40. Hidrologia		
41. Hidrologia		
42. Hidrologia		
43. Hidrologia		
44. Hidrologia		
45. Hidrologia		
46. Hidrologia		
47. Hidrologia		
48. Hidrologia		
49. Hidrologia		
50. Hidrologia		

- MAINLY GOALS**
- Understand the population risk perception:**
- Level of knowledge?;
 - What kind of actions promotes?;
 - What are the risks that most concern?;
 - Capacity to deal with a disaster situation?;
- Assess the need to improve our emergency services;**
- Authorities performance?;
 - Quality of information available?.





ESSENTIAL 7

Ensure that education programmes and training on disaster risk reduction are in place in schools and local communities.

2. AMADORA LOCAL CAMPAIGN 2010-2015

2.3. IMPLEMENTATION OF TEN ESSENTIALS

TOOLS TO SUPPORT TRAINING AND AWARENESS OF COMMUNITY



EMERGENCY KIT
Distribution for all stakeholders



AMADORA WEBSITE
Campaign documents



LOCAL CAMPAIGN ON FACEBOOK
www.facebook.com/amadora.resiliente



LOCAL CAMPAIGN ON YOUTUBE
www.youtube.com/user/UNISDRAmadora

facebook Amadora Resiliente

Amadora Resiliente Fotos

Adicionar fotos Adicionar vídeos

Sua álbum (29) Vídeos (7)

Fotos do mural 11 fotos

Ação de Sensibilização "Desta..." 11 fotos

Sensibilização e Formação "1º a..." 18 fotos

Campanha Amadora Resiliente... 22 fotos

Participação em eventos 21 fotos

Informação e Sensibilização "1º..." 9 fotos

Iniciativa "Marcha pelo Ambie..." 19 fotos

4º Geoforum - Contributo da U... 24 fotos

Apresentação de Mesas Temá... 9 fotos

Apresentação da Campanha a... 2 fotos

Formação e Sensibilização "CL..." 5 fotos

VII Feira das Vantagens 8 fotos

Da Internacional Proteção Civil... Da Internacional Proteção Civil... Exercício TERRA8070_2411 JA... VII Conferência "Da Internac...

Patrocinado por Carta Bandeyard

Adri e recebe um cartão presente. Cartão no valor de €301 TACB: 33,1% Registo

10% em Bens escolares

Recomende as lires escolares em www.combate.pt e carte que 30% de desconto em carte.

Fotos do mural

Por Amadora Resiliente (Álbum) Atualizado há 16 minutos Editar álbum

Jogos que você pode gostar

ChefVille 2 de seus amigos convidaram você a jogar ChefVille. Jogar agora

Pessoas que você talvez conheça Ver todas

Ricardo De Alabias Malale 2 amigos em comum Adicionar aos amigos

Paolo Volvosa Adicionar aos amigos

Adriade Espírito Santo 3 amigos em comum Adicionar aos amigos

Sérgio Soares Adicionar aos amigos

Rui Gomes 1 amigo em comum Adicionar aos amigos

Fotos de amigos

Haroldo - Marco Raposo e Olga Almeida

YouTube Procurar Enviar vídeos

Procurar Enviar vídeos Fazer login

TOOLS TO SUPPORT TRAINING
"LOCAL CAMPAIGN SOCIAL NETWORKS"

Canal Amadora Resiliente

Em destaque Feed Vídeos

Atualizado Listas de reprodução Gosta

Sobre Canal Amadora Resiliente

O Canal Amadora Resiliente é o espaço institucional da Campanha Local UN-ISDR "Sempre em Movimento, Amadora é Resiliente". O principal objetivo, deste espaço, é informar e sensibilizar a comunidade da Amadora, sobre a relevância das temáticas do II.

de UNISDRAmadora

Atividade mais recente 03/07/2012

Data de inscrição 16/12/2011

Idade 32

País Portugal

Canais em destaque

UNISDR 234 inscrições

Campanha Amadora Resiliente 7:39 11 views · 1 mês atrás

Campanha Amadora Resiliente 7:40 42 views · 2 meses atrás

Campanha Local UN-ISDR 1:40 82 views · 6 meses atrás

Canal Amadora Resiliente

Em destaque Feed Vídeos

Atualizado Listas de reprodução Gosta

Sobre Canal Amadora Resiliente

O Canal Amadora Resiliente é o espaço institucional da Campanha Local UN-ISDR "Sempre em Movimento, Amadora é Resiliente". O principal objetivo, deste espaço, é informar e sensibilizar a comunidade da Amadora, sobre a relevância das temáticas do II.

de UNISDRAmadora

Atividade mais recente 03/07/2012

Data de inscrição 16/12/2011

Idade 32

País Portugal

Canais em destaque

UNISDR 234 inscrições

Desastres Naturais Nacional 2 vídeos · 3 meses atrás

Informação e Sensibilização 17 vídeos · 3 meses atrás

Desastres Naturais Amadora Um vídeo · 6 meses atrás

Children and Young People 5 vídeos · 3 meses atrás

Desastres Naturais Internaci... 3 vídeos · 4 meses atrás



ESSENTIAL 8

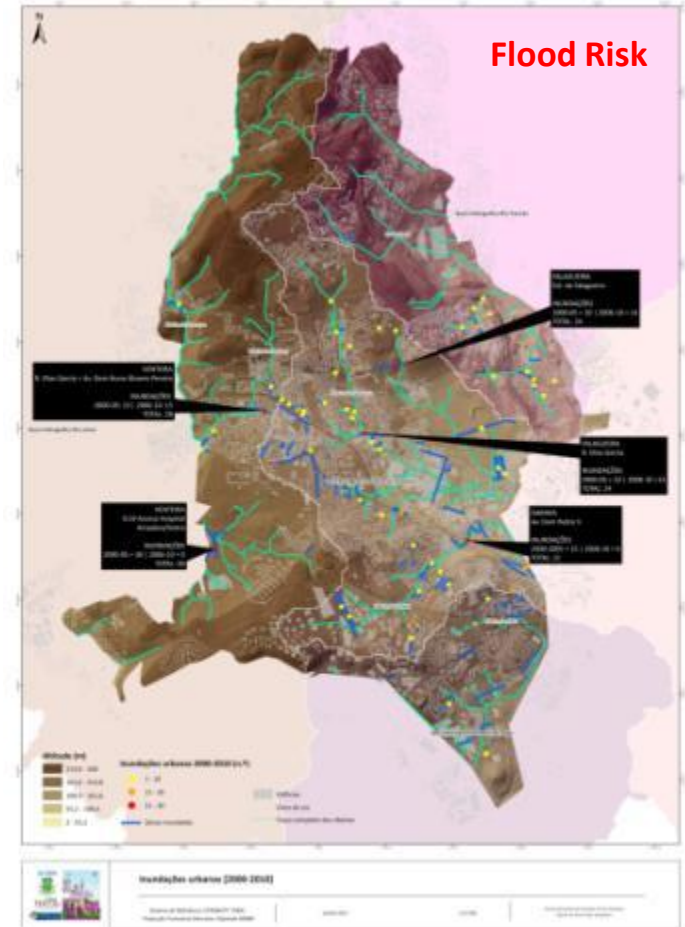
Protect ecosystems and natural buffers to mitigate floods, storm surges and other hazards to which your city may be vulnerable.

The municipality has several rivers that cause floods. There is national legislation that define protective buffers for streams. There are still some situations of buildings along the streams!

Construction of urban parks along the margins of streams. Increased green space and connection with nature.

2. AMADORA LOCAL CAMPAIGN 2010-2015

2.3. IMPLEMENTATION OF TEN ESSENTIALS



URBAN PARK
"CENTRAL PARK AMADORA"





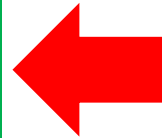
ESSENTIAL 8 

Protect ecosystems and natural buffers to mitigate floods, storm surges and other hazards to which your city may be vulnerable.

2. AMADORA LOCAL CAMPAIGN 2010-2015
2.3. IMPLEMENTATION OF TEN ESSENTIALS

ECOXXI PROGRAMME

- Encouraging municipalities to the importance of their role as partners and actors of the process of environmental education for sustainable development;
- Involve municipalities in supporting the implementation of environmental education programs for Sustainable Development ;
- Create awareness among municipalities for the importance of the partnership with the school projects under the implementation of Local Agenda 21;
- Create awareness among municipalities towards greater integration of environmental concerns into municipal policies;
- **Contribute to the development of local sustainability indicators.**



WE NEED TO PROMOTE MORE GREEN GROWTH AND ECOSYSTEM PROTECTION

WORKSHOP
"ECOXXI SESSION"



TERESA LARSEN
Associação Bandeira Azul da Europa

RUI QUEIROIS
Associação Bandeira Azul da Europa

ANITA MOURA
Associação Bandeira Azul da Europa

ecoXXI



Fundação para a Educação Ambiental no Europe
Associação Bandeira Azul da Europa



ESSENTIAL 9 ↑

Install early warning systems and emergency management capacities in your city and hold regular public preparedness drills.

AMADORA METEOROLOGICAL STATION

METEOROLOGICAL NATIONAL INSTITUTE

REAL TIME INFORMATION ON THE INTERNET
 (temperature, rainfall, humidity, pressure, ...)

FORECASTS
 (temperature, rainfall, humidity, pressure, ...)

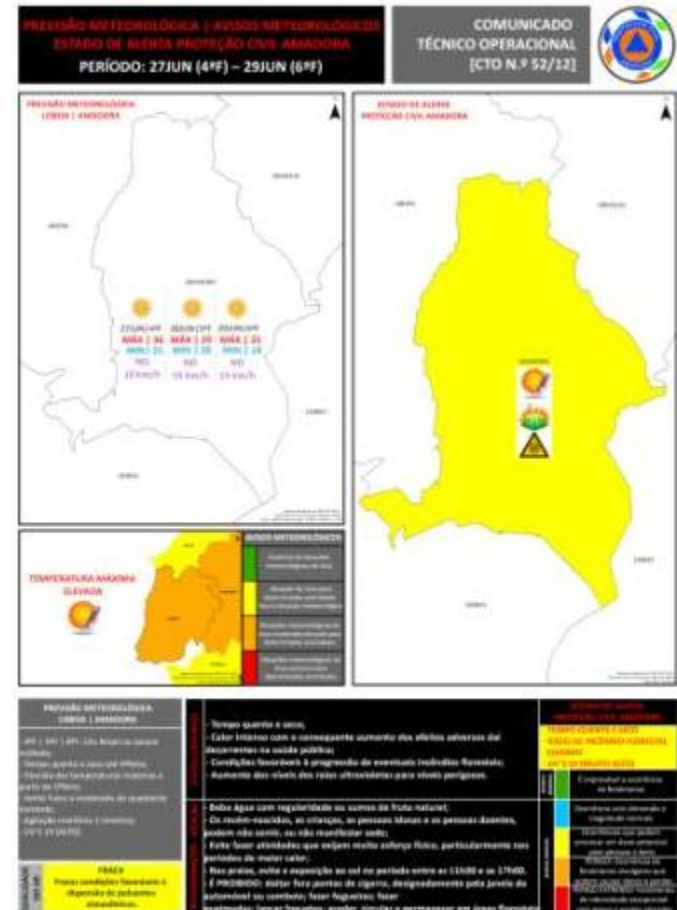
WEATHER WARNINGS

DISSEMINATES INFORMATION

CIVIL PROTECTION SERVICE

RESPONSIBLE FOR THE PREPARATION OF COMMUNITY

2. AMADORA LOCAL CAMPAIGN 2010-2015
2.3. IMPLEMENTATION OF TEN ESSENTIALS





ESSENTIAL 9 ↑

Install early warning systems and emergency management capacities in your city and hold regular public preparedness drills.

MUNICIPAL EMERGENCY PLAN IN PROGRESS

- [improve preparedness]
- [upgrade city emergency response]
- [improve recovery operations]

SOME CONTINGENCY AND PREPAREDNESS PLANS

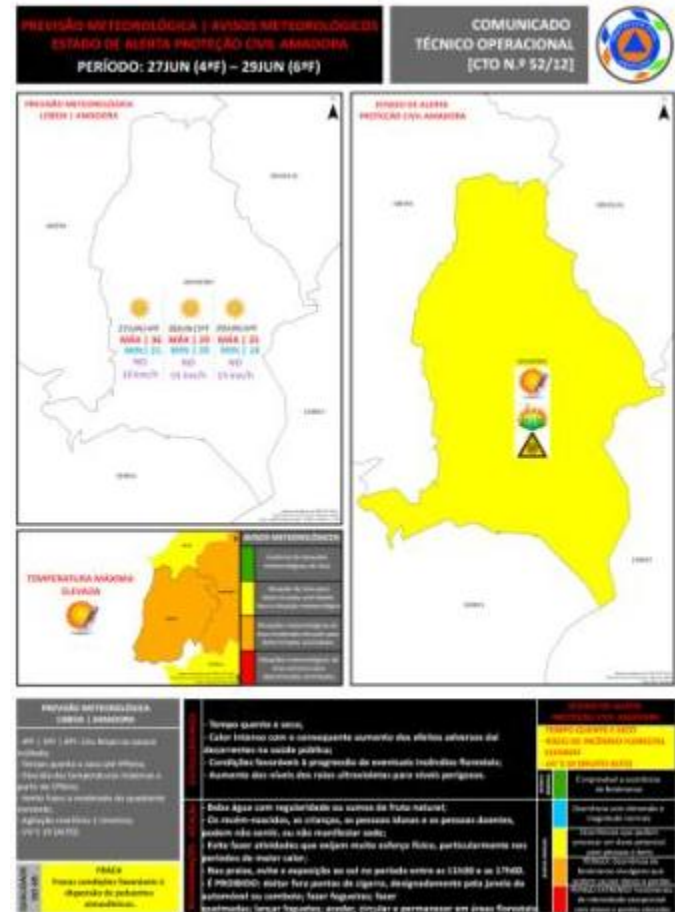
- [loss scenarios]
- [public preparedness drills]

Mailing-list

Accesible multi-hazard early warning system

Social networks

2. AMADORA LOCAL CAMPAIGN 2010-2015
2.3. IMPLEMENTATION OF TEN ESSENTIALS

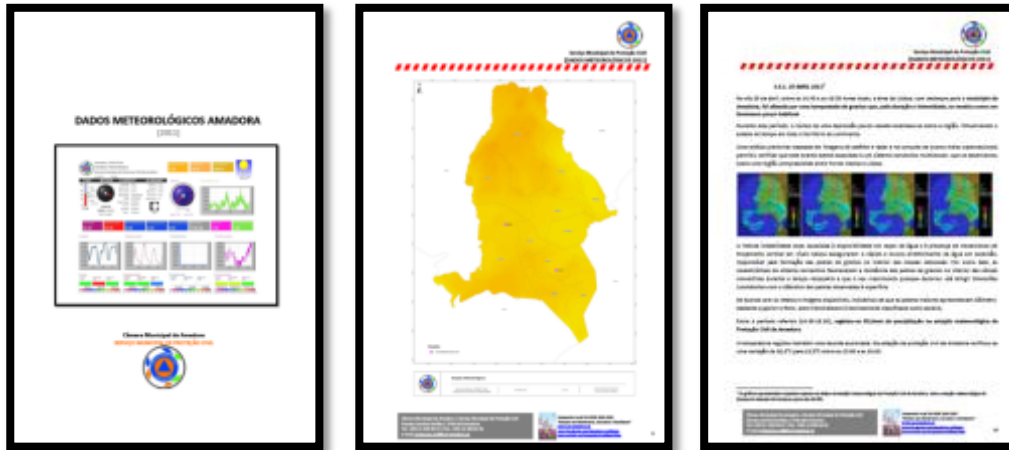




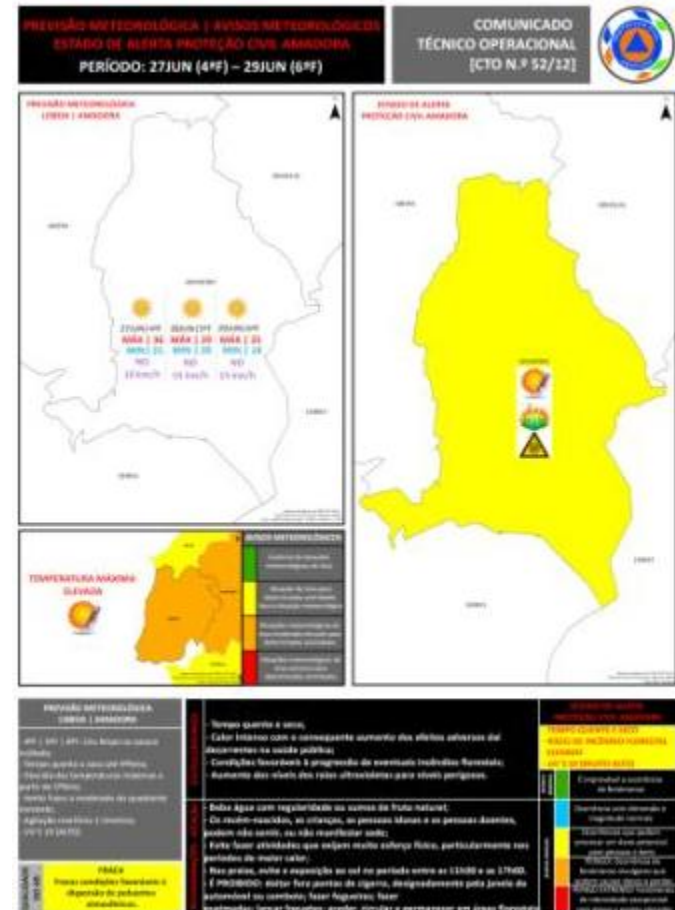
ESSENTIAL 9 ↑

Install early warning systems and emergency management capacities in your city and hold regular public preparedness drills.

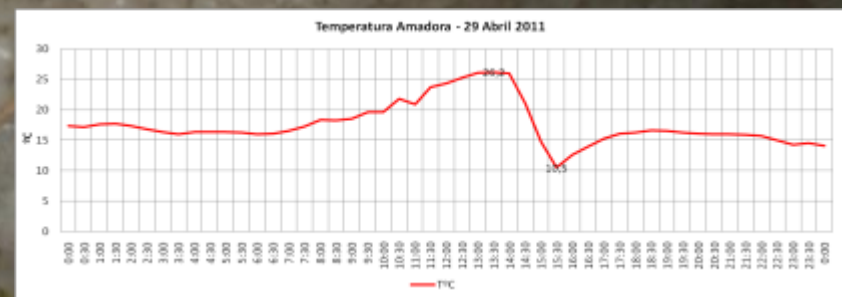
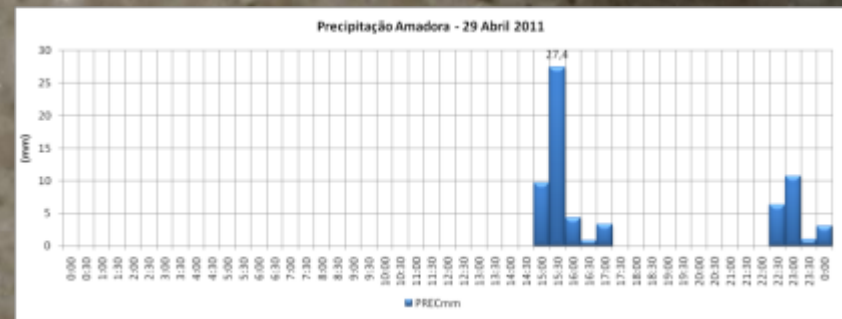
2. AMADORA LOCAL CAMPAIGN 2010-2015
2.3. IMPLEMENTATION OF TEN ESSENTIALS



**METEOROLOGICAL STUDY
 UNDERSTAND EXTREME WEATHER EVENTS
 AND CLIMATE CHANGE IMPACT**



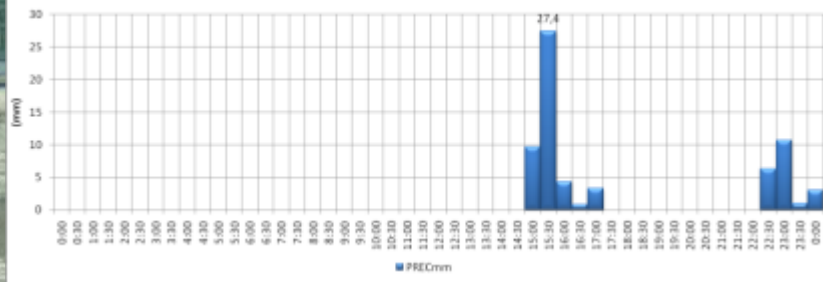
HAILSTORM
APRIL 29th [2011]



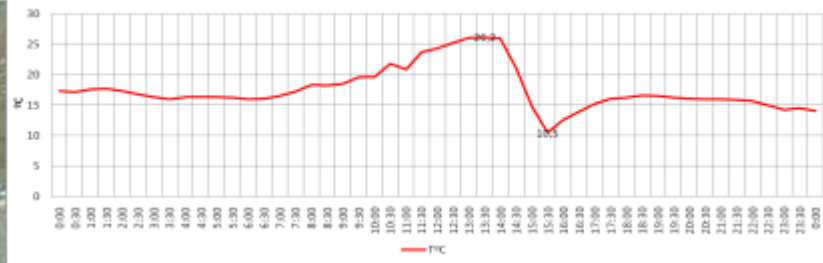
FLOOD
MAY 28th [2011]



Precipitação Amadora - 29 Abril 2011



Temperatura Amadora - 29 Abril 2011





PUBLIC AWARENESS
"HEATWAVE INFORMATION
SESSIONS"





TRAINING
"PUBLIC PREPAREDNESS
DRILLS"



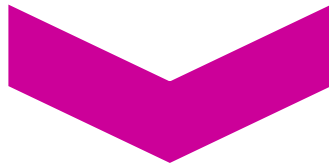


ESSENTIAL 10

After any disaster, ensure that the **needs of the affected population** are placed at the centre of reconstruction, with support for them and their **community organisations** to design and **help** implement responses, including rebuilding homes and livelihoods

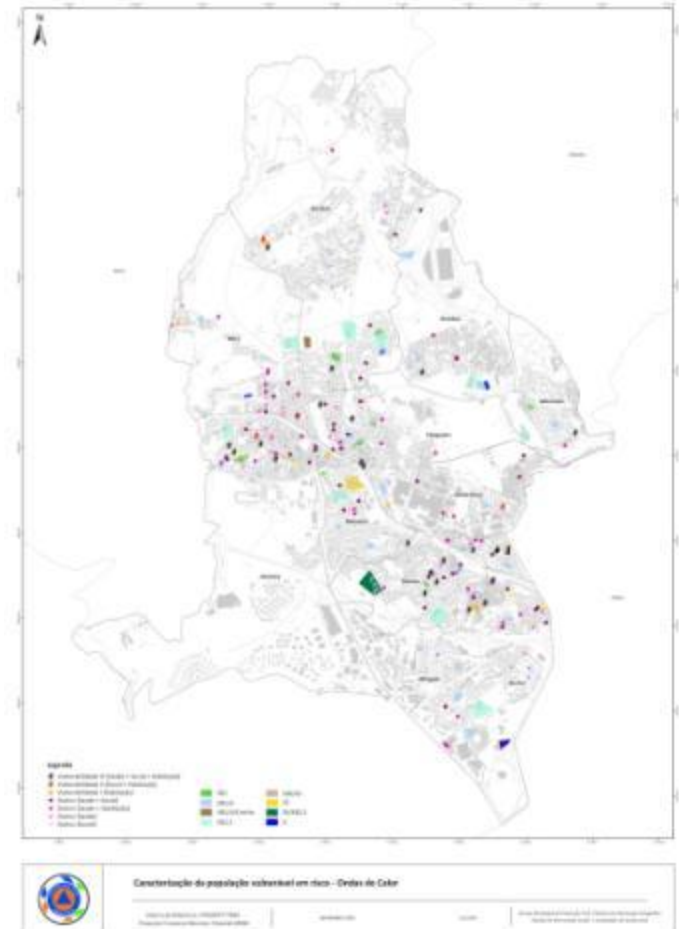
SEVERAL PLANS ARE IN PROGRESS FOR THE POST DISASTER

- [Municipal Emergency Plan]
- [Contingency Plan for Heat Waves]
- [Contingency Plan for Cold Waves]

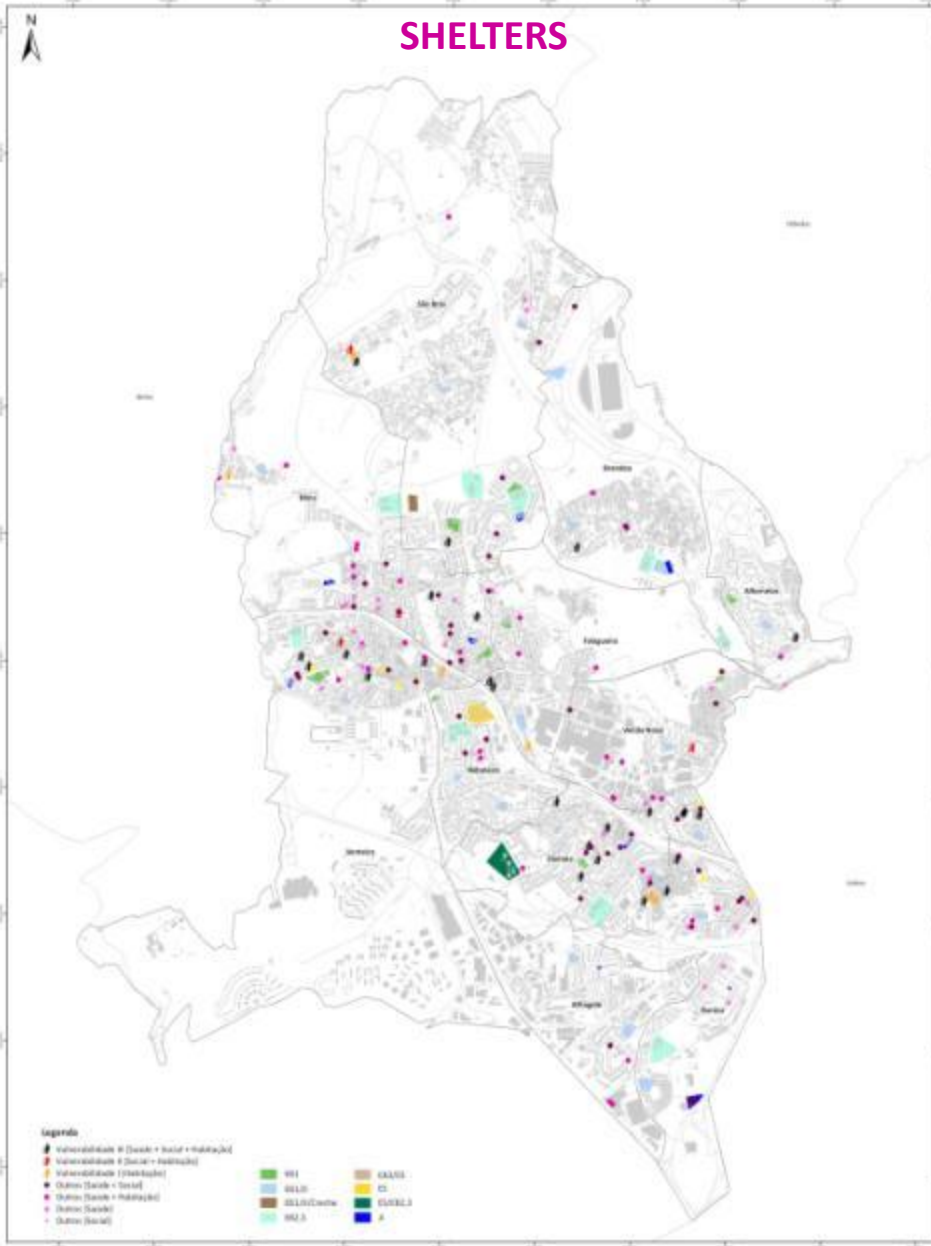


Plans will consider recovery and reconstruction
Resources that will be needed

2. AMADORA LOCAL CAMPAIGN 2010-2015 2.3. IMPLEMENTATION OF TEN ESSENTIALS



SHELTERS



MOST VULNERABLE POPULATION TO DISASTERS



Caracterização da população vulnerável em risco - Ondas de Calor

Sistema de Informação - SIMPOP 2008
População Turística Municipal - Situação de 2008

10/06/2010

1:20.000

Secretaria Municipal de Proteção Civil - Núcleo de Informação e Apoio
Rede de Informação Social - Núcleo de Apoio à C.A.P.



Indivíduos considerados nos grupos de risco - Ondas de Calor

Sistema de Informação - SIMPOP 2008
População Turística Municipal - Situação de 2008

10/06/2010

1:20.000

Secretaria Municipal de Proteção Civil - Núcleo de Informação e Apoio
Rede de Informação Social - Núcleo de Apoio à C.A.P.



The Ten Essentials for Making Cities Resilient Checklist

- ✓ 1. Put in place **organisation and coordination** to understand and reduce disaster risk, based on participation of citizen groups and civil society. Build local alliances. Ensure that all departments understand their role in disaster risk reduction and preparedness.
- ✓ 2. **Assign a budget** for disaster risk reduction and provide incentives for homeowners, low income families, communities, businesses and the public sector to invest in reducing the risks they face.
- ✓ 3. Maintain up to date data on hazards and vulnerabilities. **Prepare risk assessments** and use these as the basis for urban development plans and decisions, ensure that this information and the plans for your city's resilience are readily available to the public and fully discussed with them.
- ✓ 4. Invest in and maintain **critical infrastructure that reduces risk**, such as flood drainage, adjusted where needed to cope with climate change.
- ✓ 5. Assess the safety of all schools and health facilities and upgrade these as necessary.
- ✓ 6. Apply and enforce **realistic, risk compliant building regulations and land use planning principles**. Identify safe land for low income citizens and upgrade informal settlements, wherever feasible.
- ✓ 7. Ensure that **education programmes and training** on disaster risk reduction are in place in schools and local communities.
- ✓ 8. **Protect ecosystems and natural buffers** to mitigate floods, storm surges and other hazards to which your city may be vulnerable. Adapt to climate change by building on good risk reduction practices.
- ✓ 9. Install early warning systems and emergency management capacities in your city and hold regular public preparedness drills.
- ✓ 10. After any disaster, ensure that the **needs of the affected population are placed at the centre of reconstruction**, with support for them and their community organisations to design and help implement responses, including rebuilding homes and livelihoods.

2. AMADORA LOCAL CAMPAIGN 2010-2015

2.4. CAMPAIGN RESUME

CAMPAIGN ORGANIZATION AND COORDINATION

SCHOOL/LOCAL TRAINING

STUDIES AND PLANS IN PROGRESS

RISK REDUCTION ON STAKEHOLDERS FACILITIES

ACCESIBLE MULTI-HAZARD EARLY WARNING SYSTEM



STRONG CONTRIBUTION TO THE STRATEGIC PLANNING [RESILIENCE]



BUDGET

ECOSYSTEMS PROTECTION

MORE RESILIENCE BUILDINGS

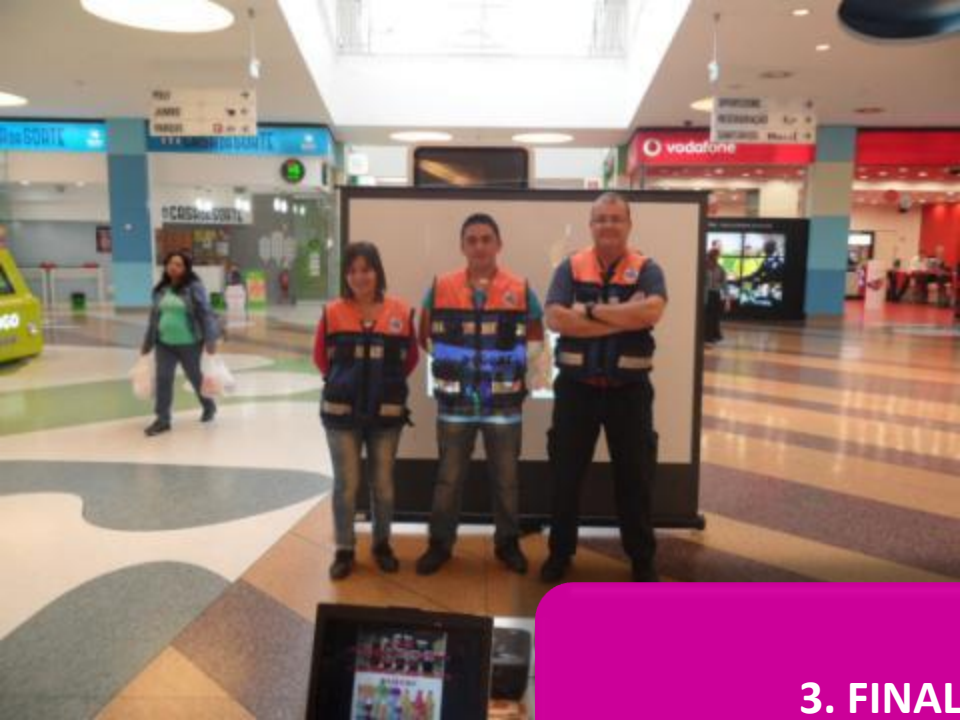


NEED TO IMPROVE



ANNUAL CONFERENCE 2010
"INTERNACIONAL DAY FOR
DISASTER REDUCTION"





3. FINAL NOTES





3. FINAL NOTES

IN DISASTERS, LOCAL GOVERNMENTS ARE THE FIRST LINE OF RESPONSE!

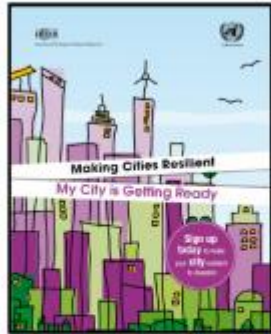
RISK REDUCTION MUST BE AN INTEGRAL PART OF LOCAL DEVELOPMENT

RISK REDUCTION PROCESS SHOULD BE PARTICIPATORY AS POSSIBLE

INCREASE THE CAPACITY OF LOCAL GOVERNMENT TO LEAD TO RISK AND DISASTER CHALLENGES



STAKEHOLDERS



PORTFÓLIO
CAMPANHA LOCAL UN-ISDR 2010-2015
 "Sempre em Movimento, Amadora é Resiliente"



CAMPANHA LOCAL 2010-2015
 "Sempre em Movimento, Amadora é Resiliente"

2.2. ACTIVIDADES DESARROLLADAS 2010-2011

2.2.1. ETAPA 1 - Preparação e Mobilização da Comunidade

O primeiro passo da Campanha Local UN-ISDR "Sempre em Movimento, Amadora é Resiliente" consistiu na seleção, envolvimento e participação de diversos stakeholders (Figura 2) com diversas funções no processo de gestão do risco: académicos-científicos, administração local, serviços municipais, empresas público-privadas, socorro e emergência, instituições particulares de solidariedade social (IPSS), organizações não-governamentais e comunidade escolar.

A capacitação de todos os stakeholders para colaborar e trabalhar a resiliência, melhorar a preparação do risco, apoiar no trabalho de consciência e no poder de acção e decisão das comunidades.

Figura 1 - Participantes/Instituições, no período 2010-2011, da Campanha Local UN-ISDR

De modo a garantir a mobilização de toda a comunidade, o Município apresentou publicamente, com o apoio dos diversos stakeholders, os objectivos da sua Campanha Local UN-ISDR "Sempre em Movimento, Amadora é Resiliente", no dia 18 no Conselho Local de Acção Social (CLAS), e no dia 18 de dezembro de 2010 no Centro Vila Tejo.

CAMPANHA LOCAL 2010-2015
 "Sempre em Movimento, Amadora é Resiliente"

A campanha internacional assume como principais objectivos:

- Reforçar e apoiar os governos locais, grupos comunitários e líderes, envolvidos no processo de gestão do risco;
- Instar a administração local a tomaron medidas para reduzir a vulnerabilidade das cidades, ao desastre;
- Aumentar a conscientização dos cidadãos e dos governos ao nível da redução dos riscos urbanos;
- Dar as diversas entidades locais com um enquadramento prioritário para promover actividades de redução do risco;
- Inclua e fortaleça da redução do risco no processo de planeamento, através de acções participativas.

Figura 1 - Cinco pilares da resiliência urbana

CAMPANHA LOCAL 2010-2015
 "Sempre em Movimento, Amadora é Resiliente"

2.2.2. ETAPA 2 - Avaliação Rápida e Participativa dos Riscos | ETAPA 1: Avaliação Participativa das Vulnerabilidades

Após a preparação e a mobilização da comunidade é fundamental o desenvolvimento de diagnósticos e análise do risco. Assim sendo, promover-se junto dos parceiros da comunidade escolar, administração local, entidades público-privadas, e entidades de socorro e emergência, um conjunto de sessões de trabalho, de forma a garantir o "compromisso" de colaboração e cooperação com a campanha. Cada parceria, assumiu uma estratégia de participação assente em cinco eixos:

1. Identificação de vulnerabilidades e proposta de melhorias, no âmbito do projecto de Plano Anual de Segurança Contra Incêndio em Edifícios (PAINCE);
2. Desenvolvimento/actualização da elaboração dos manuais de auto-protecção, nomeadamente na elaboração do Plano de Emergência Interna;
3. Formação/informação interna (funcionários e alunos);
4. Realização de simulacros internos de evacuação;
5. Realização de actividades formativas, em falta a nível a nível e participação nas sessões em curso na campanha.

Figura 4 - representação da estratégia de participação de sessões de trabalho

Figura 5 - Apresentação, no Município de Amadora, da estratégia de cinco eixos de intervenção da campanha local UN-ISDR. Participantes do CLAS

Em baixo, segue a lista de parceiros aderentes aos eixos propostos:

- Centro Social Paroquial São Brás;

Figura 6 - reunião comunitária sobre o plano de participação.

CAMPANHA LOCAL 2010-2015
 "Sempre em Movimento, Amadora é Resiliente"

para o período 2010-2011, no Município de Amadora, que estará terminado no próximo trimestre de 2012.

Figura 6 - Distribuição das actividades por eixo de intervenção, no período 2010-2011. Nota: CLAS (CLAS) e Associação Amadora-Comunidade

A análise dos dados das ocorrências (incidentes industriais, transações urbanas, acidentes urbanos), incidentes florestais, deslizamentos, fugas de gás serviu de base para a criação de cartografia de risco e planificação de medidas para a redução do desastre. Para além disso, é um contributo bastante importante para perceber os diagnósticos dos fenómenos e a capacidade de resposta dos vários agentes em situação de emergência.

Figura 10 - Registo de ocorrências à comunidade de Amadora, sobre a preparação do risco

Figura 11 - Avaliação de risco de Amadora. Base de dados de Amadora - conjuntura do Serviço Municipal de Protecção Civil de Amadora.

CAMPANHA LOCAL 2010-2015
 "Sempre em Movimento, Amadora é Resiliente"

Figura 11 - Avaliação de risco de Amadora. Base de dados de Amadora - conjuntura do Serviço Municipal de Protecção Civil de Amadora

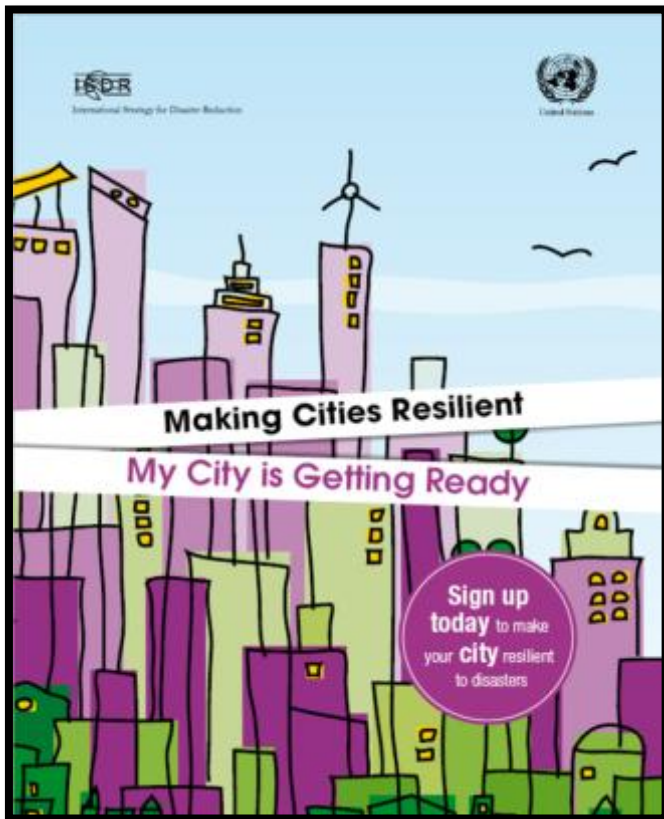


3. FINAL NOTES

"The risks are a biophysical fragility of the territory. Their impact on the infrastructures and population involve a strong strategy. Preparedness, mitigation, prevention are the key of success. Our task is promote a campaign with maximum possible number of agents from the local, scientific and academic communities, demonstrating the relevance of risk reduction in Amadora municipality"

Joaquim Moreira Raposo, Amadora Mayor





UN-ISDR 2010-2015 AMADORA LOCAL CAMPAIGN

TRAINING OF TRAINERS ON THE ROLE OF LOCAL GOVERNMENTS
IN MAKING CITIES MORE RESILIENT TO DISASTERS
[LEBANON 4-6 SEPTEMBER 2012]



INTERNATIONAL STRATEGY FOR DISASTER REDUCTION
Making Cities Resilient – My City is Getting Ready 2010-2015
<http://www.unisdr.org/english/campaigns/campaign2010-2015/cities/>



AMADORA MUNICIPALITY
Campaign Team
Tel. +351 21 494 86 38 | e-mail: proteccao.civil@cm-amadora.pt
www.cm-amadora.pt
www.facebook.com/amadora.resiliente
<http://www.youtube.com/user/UNISDRAmadora/videos>

STAKEHOLDERS:

